

# 科技中联，匠心相伴 ZOOMLION TECHNOLOGY WITH INGENUITY AND CARE



## 全球领先的挖掘机智能制造工厂

### The world's leading excavator intelligent manufacturing factory

中联智慧产业城土方机械园区拥有行业领先的智能化、柔性化的挖掘机工厂，从一块钢板到一台挖掘机，以高精度的焊接工艺、高可靠的装配工艺、高级别的涂装工艺和严苛的品质管控，让每一台交付的挖掘机都具备极致品质。

Zoomlion Smart City Earthmoving Machinery Park is an industry-leading intelligent and flexible excavator factory. From a piece of steel plate to an excavator, with high-precision welding process, highly reliable assembly process, high-level coating process and strict quality control, each excavator is delivered with ultimate quality.

**ZOOMLION**

**Zoomlion Heavy Industry Science & Technology Co.,Ltd.**

Add: No.361, South Yinpen Road, Changsha, Hunan Province, P.R.China 410013 Email: earthmoving@zoomlion.com  
Copyright© Zoomlion. All rights reserved. Reproduction and copying of any part of contents is not allowed for any purposes without Zoomlion's approval.  
Note: Materials and specifications are subject to change without notice. Featured machines in photos may include additional equipment.



SOUTHEAST ASIA

# ZOOMLION 15-TONNAGE WHEEL HYDRAULIC EXCAVATOR

中联重科15吨级轮胎式液压挖掘机  
ZE150WG



**ZOOMLION**





发动机功率：  
ENGINE POWER:  
**104 kW @ 2200 rpm**

操作重量：  
OPERATING WEIGHT:  
**14600 kg**

铲斗容量：  
BUCKET CAPACITY:  
**0.6 m<sup>3</sup>**

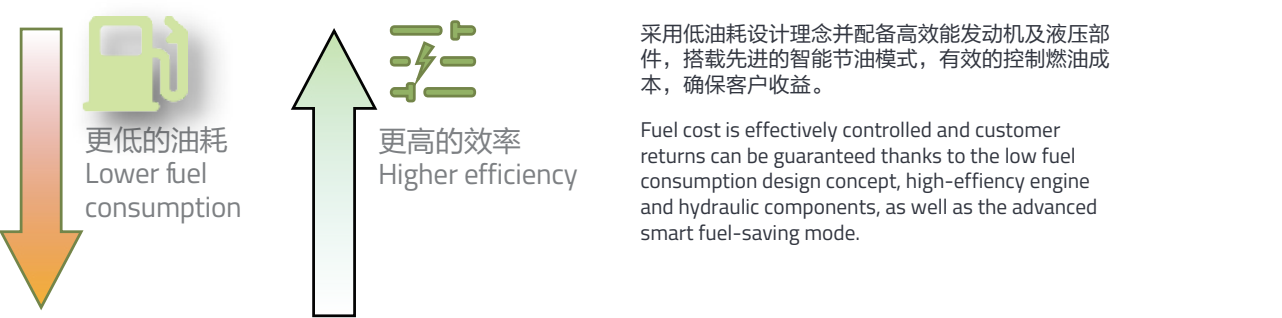


节能高效

ENERGY SAVING & HIGH EFFICIENCY

永不止步地探索节能高效

NEVER STOP EXPLORING ENERGY SAVING AND HIGH EFFICIENCY

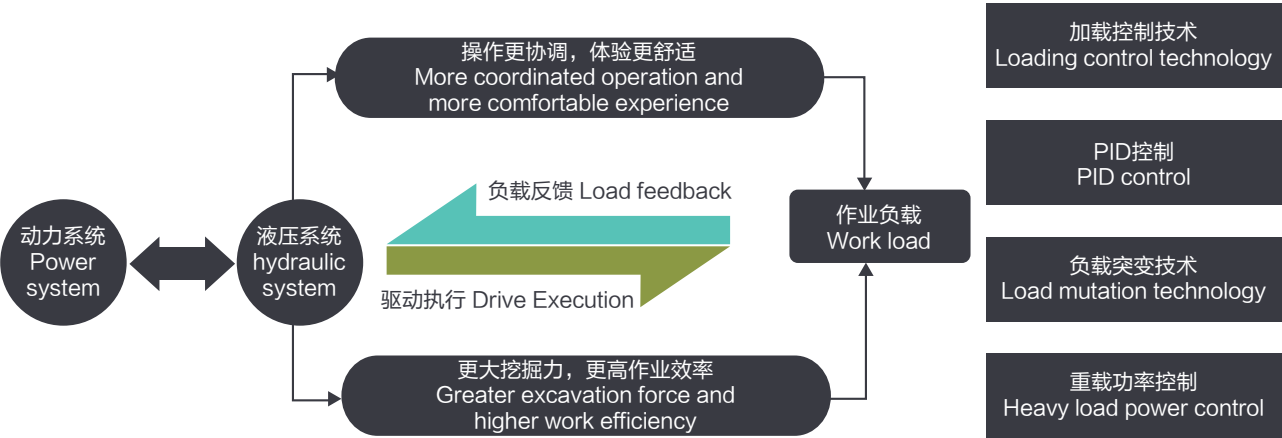


成熟稳定的ELAC电控系统（负载自适应控制系统）

Mature and stable ELAC electronic control system (load adaptive control system)

通过加载控制技术、PID控制、负载突变技术、重载功率提升技术等降低产品油耗、提升操作协调性，拥有更高的操作效率。自主开发轮挖专用控制策略，实现发动机与液压系统的最优匹配。采用行业首创基于容积调速技术的行驶控制策略，行驶油耗优于竞品。

By using load control technology, PID control, load mutation technology, and overload power improvement technology, the product's fuel consumption can be reduced and operational coordination can be improved, resulting in higher operational efficiency. Independently developing a dedicated control strategy for wheel excavator, it achieves optimal matching between the engine and hydraulic system. Adopting the industry's primary driving control strategy based on volumetric speed regulation technology, the driving fuel consumption is better than that of competitors.



大容量铲斗

LARGE-CAPACITY BUCKET



标配0.6m³大容量铲斗，提供更高效率的作业能力。

The standard 0.6m³ large-capacity bucket provides more efficient work capacity

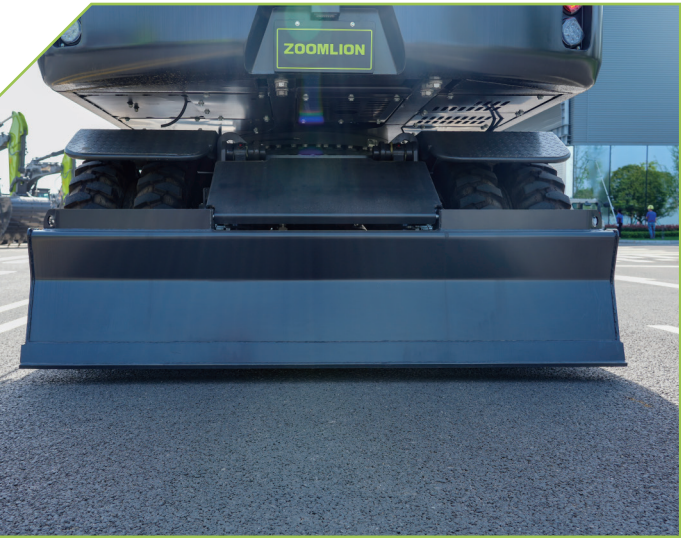


选配0.1m³窄斗，0.34m³窄斗，挖沟作业效率更高。

The optional 0.1m³ narrow bucket 0.34m³ narrow bucket provides higher efficiency in trenching work.

大截面推土铲

LARGE CROSS-SECTION BLADE



推土铲大截面设计，耐磨坚固，经久耐用。主要关键点均采用集中润滑，保养便捷。

The large cross-section blade is wear-resisting, robust and durable. The main key points are all lubricated centrally, making maintenance convenient.





# 操控精准

## PRECISE CONTROL



刹车、油门人机工程布局，电子油门踏板比例控制主阀流量和发动机转速，可实现定制化的操作感受，轿车级的驾乘体验。

The human-machine engineering layout of the brake and throttle, with electronic throttle pedal proportional control of the main valve flow and engine speed, can achieve customized operating experience, providing a sedan level driving experience.

### 高可靠性车桥变速箱

#### HIGH RELIABILITY AXLE GEARBOX



全车无级变速换挡，实时四驱，时速可达35km/h。  
搭载高压自变量和外控越权控制的行走系统，三级变速在，越野和公路模式可随意切换，自适应双平衡液压悬挂系统，悬挂、刹车、行走逻辑控制，提升行驶安全性；双回路独立控制的刹车系统，安全稳定。

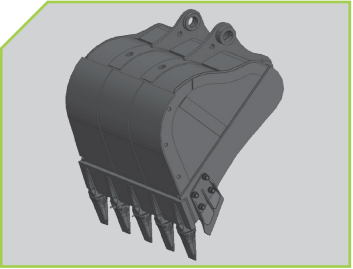
The whole machine is equipped with infinitely variable speed, with real-time four-wheel drive and a speed of up to 35 km/h. Equipped with a high-pressure independent variable and external control exceeding authority control traveling system, with three levels of variable speed, off-road and road modes can be freely switched, and an adaptive dual balance hydraulic suspension system with suspension, braking, and traveling logic control, improving driving safety; A dual circuit independent control brake system, safe and stable.

# 可靠耐久

## RELIABLE & DURABLE

### 减阻耐磨铲斗

#### RESISTANCE-REDUCTION AND WEAR PROOF BUCKET

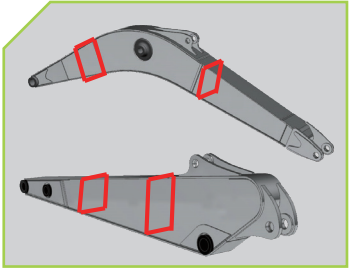


C型强化斗  
标配0.6m³强化斗，挖掘、装载效率更高；  
C型斗型优化设计，挖掘装载作业不沾斗，工作效率更高；  
采用大面积高强度耐磨板覆盖，铲斗结构强度和刚度更高，使用寿命更长。

C-type reinforced bucket  
Standard configuration 0.6m³ Enhanced bucket for higher efficiency in excavation and loading;  
With C-shaped bucket optimization design, the bucket will be non-stick in excavation and loading work, resulting in higher work efficiency;  
Using large-area high-strength wear-resistant plates for coverage, the bucket structure has higher strength and stiffness, and a longer service life.

### 加强型结构件

#### REINFORCED STRUCTURAL COMPONENTS

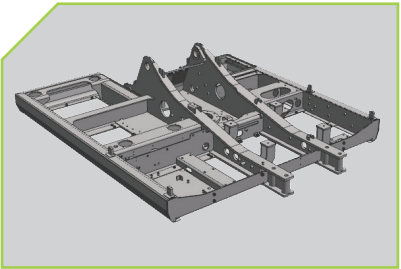


动臂截面箱体设计，整体截面增加9%，前、中、后支架采用高强度结构设计，强度更高，更适应恶劣工况；斗杆前、后支承采用高强度结构，整体截面增加6%，承载面积更大，性能更可靠。

The design of the boom section box increases the overall section by 9%. The front, middle, and rear brackets adopt high-strength structural design, which is stronger and more suitable for harsh working conditions; The front and rear supports of the bucket adopt high-strength structures, increasing the overall cross-section by 6%, with a larger bearing area and more reliable performance.

### 高强度车架

#### HIGH STRENGTH FRAME

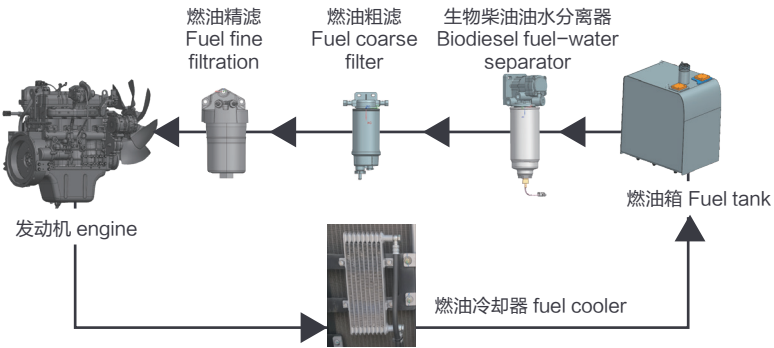


车架采用加高的D型边梁、加高型工字主梁，关键部位采用高强钢板，经过了苛刻耐久试验，使得整体强度更高，安全性更好。

The frame adopts a raised D-shaped edge beam and a raised I-shaped main beam, and key parts are made of high-strength steel plates. After rigorous durability tests, the overall strength is higher and safety is better.

### 多级燃油过滤

#### MULTI STAGE FUEL FILTRATION



采用三级大容量过滤系统，滤芯过滤精度进一步提升，杂质过滤达到99.9%，并且在15吨机型上使用燃油冷却器，精准控制燃油温度，使发动机始终处于最佳状态，提高发动机寿命的同时，降低了燃油消耗。

Adopting a three-stage high-capacity filtration system, the filtration accuracy of the filter element is further improved, and the impurity filtration reaches 99.9%. In addition, a fuel cooler is used on the 15 ton model to precisely control the fuel temperature, ensuring that the engine is always in optimal condition, improving engine life while reducing fuel consumption.



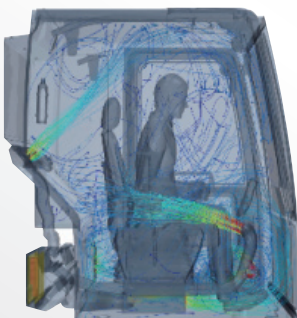
安全舒适

SAFE & COMFORTABLE



采用异型管界面骨架，改善型密封结构设计，大功率空调，全新出风口优化布局。安全性、舒适性、可靠性得到大幅提高。

Adopting a special-shaped pipe interface skeleton, improved sealing structure design, high-power air conditioning, and a brand new optimized layout of air vents. The safety, comfort, and reliability have been greatly improved.



模拟驾驶室内流场分布，优化风道。

Simulate the flow field distribution inside the driver's cabin and optimize the air duct.



大行程专用悬浮座椅，全包裹舒适体验。

Dedicated suspension seats for long journeys, providing a fully enclosed and comfortable experience.



多功能转向柱三级调节，集档位、雨刮、巡航、功能控制等一体，常规功能按钮集中布置在转向柱，触手可及，操作方便。

The multifunctional steering column has three levels of adjustment, integrating gear, wiper, cruise, and function control. The conventional function buttons are centrally arranged in the steering column, which is easy to reach and operate.



8英寸大触摸式显示屏  
实时显示整机状态，操纵更舒适。

8-inch large touchscreen display  
Real time display of the overall machine status for more comfortable operation.



USB  
蓝牙  
Bluetooth  
数据传输  
Data Transmission  
高集成化控制面板  
Highly integrated control panel





# 保养便捷

## CONVENIENT MAINTENANCE



空滤保养伸手可及，玻璃水便捷加注，散热器集中式布置，加氟口加注方便

Air filter maintenance is within reach, glass water is easily refilled, radiators are centrally arranged, and fluorine filling ports are convenient for refilling



配备传动轴防护罩，有效避免传动轴磕碰损坏

Equipped with a protective cover for the transmission shaft, effectively avoiding damage and collision of the transmission shaft.



空调滤芯保养便捷

Convenient maintenance of air conditioning filter



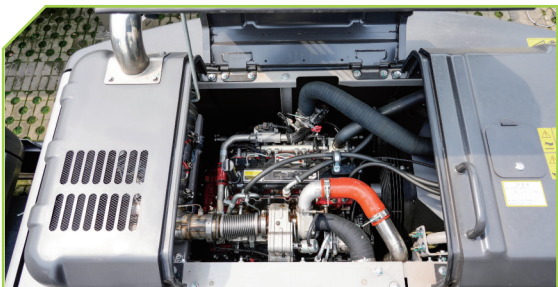
超大容量的工具箱

Large capacity toolbox



悬挂油缸垫板润滑，避免异响，防止过度磨损，提供舒适性和延长使用寿命

Lubrication of suspension cylinder pads to avoid abnormal noise, prevent excessive wear, provide comfort, and extend service life



大面积式发动机罩设计，维护便捷

Large area engine hood design for easy maintenance



黄油集中润滑

Concentrated lubrication with grease



燃油滤、机油滤集中式布置

Centralized arrangement of fuel and engine oil filter

# 客户服务

## CUSTOMER SERVICE



中联重科的愿景是“思想构筑未来”。这不仅仅是一句简单的口号，而是超越客户期望的不可动摇的决心。中联重科一直秉持这一理念，并在为客户所做的每一件事中努力践行这一理念。我们为客户提供的服务是想客户所想，急客户所急。

Zoomlion's slogan is "Vision creates future". It is not just a simple slogan, but an unshakable determination to exceed our customer's expectations. Zoomlion has always upheld this belief and tries to implement it in everything that we do for customers. The service we offer to customers is to think about what they think about and worry about what they worry about.

中联重科承诺，一旦您选择了我们，我们将随时做好响应准备，在任何时间、任何地点第一时间到达并提供解决方案。

Zoomlion promises that once you choose us, we are ready to respond with the first arrival and solution any time, anywhere.

中联重科随时提供各种服务内容、专业服务团队、全球服务网络和系统化的技术支持，无论您身处世界何时何地，均可应您的要求提供有效的响应和解决方案。

Various service content, professional service teams, global service networks and systematic technical support are readily available from Zoomlion for an effective response and solution upon your request no matter where you are in the world and what time it is.

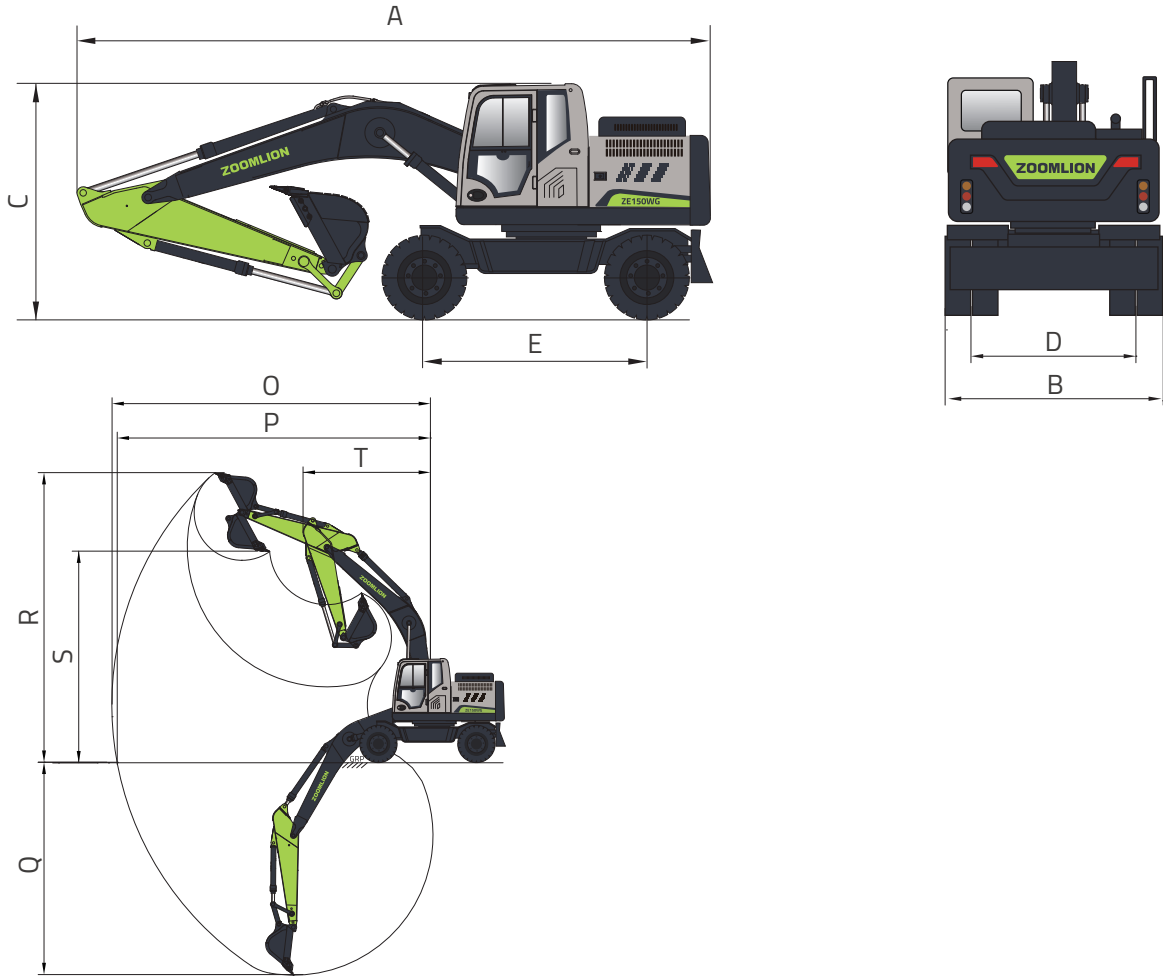


技术参数

TECHNICAL SPECIFICATIONS

	ZE150WG
发动机 ENGINE	
品牌 Brand	康明斯 Cummins
型号 Model	QSF3.8t3TC140
额定功率 Rated power	104 kW/2200 rpm
排量 Displacement	3.8L
液压系统 HYDRAULIC SYSTEM	
主泵 Main pump	2个变量柱塞泵,2×128 L/min (行走模式2×160 L/min ) Two variable displacement piston pumps Maximum flow: 2×128 L/min ( traveling mode 2×160 L/min )
先导泵 Pilot pump	1个齿轮泵,最大流量: 24 L/min (行走模式30 L/min ) One gear pump Maximum flow: 24 L/min(traveling mode 30 L/min )
最大压力 - 工作油路 Maximum pressure - Equipment	34.3 MPa
最大压力 - 回转 Maximum pressure - Swing	25 MPa
最大压力 - 行走 Maximum pressure - Travel	34.3 MPa
最大压力 - 增压模式 Maximum pressure - Boost	37 MPa
最大压力 - 先导系统 Maximum pressure - Pilot system	3.9 MPa
上车平台 UPPER FRAME	
最大回转速度 Maximum swing speed	12 r/min
最大回转扭矩 Maximum swing torque	38.2 kNm
底盘结构 UNDERCARRIAGE	
轮胎规格 Tire specifications	10×20-16 PR
轮胎数量 Number of tires	8
推土铲宽度(mm) Bulldozer width (mm)	2500
行走速度(Km/h) Walking speed (km/h)	3.8(低)/9(中)/35(高) 3.8 (low)/9 (medium)/35 (high)
最大牵引力 Maximum drawbar pull	80 kN
爬坡能力 Gradeability	70%
维护保养加注容量 SERVICE REFILL CAPACITIES	
燃油箱容积 Fuel tank	240 L
发动机冷却液 Engine coolant	27 L
发动机油 Engine oil	12 L
变速箱油 Transmission oil	3 L
桥用油 Axle oil	30 L
液压系统 Hydraulic system	130 L
液压油箱 Hydraulic tank	90 L
工作装置 WORK EQUIPMENT	
动臂长度 Boom length	4600 mm
斗杆长度 Arm length	2100 mm

	ZE150WG
整机尺寸 OVERALL DIMENSIONS	
A 总长度 A Overall length	7680 mm
B 总宽度 B Overall width	2535 mm
C 总高度 C Overall height	2905 mm
D 轮距 D Tread Gauge	1944 mm
E 轴距 E Wheelbase	2800 mm
作业范围 WORKING RANGE	
O 最大挖掘距离 O Max. Digging Reach	7990 mm
P 地面最大挖掘距离 P Max. Digging Reach at Ground Level	7775 mm
Q 最大挖掘深度 Q Max. Digging Depth	4710 mm
R 最大挖掘高度 R Max. Digging Height	8785 mm
S 最大卸载高度 S Max. Dumping Height	6220 mm
T 前部最小回转半径 T Front minimum swing radius	2500 mm





# 标配&选配

## STANDARD & OPTIONAL FEATURES

分类Category	配置项Features	ZE150WG
动力系统 Powertrain	空气滤清器 Air cleaner	●
液压系统 Hydraulic system	多属具管路 Attachments plumbing	○
	快换管路 Quick coupler plumbing	○
	破碎管路 Breaking plumbing	○
驾驶室 Cab	ROPS	○
	细网格防护 Mesh guard	○
	栅格防护 Skeleton guard	○
	灭火器 Fire extinguisher	●
	机械悬浮座椅 Mechanical suspension seat	●
	冷暖空调 Air conditioner	●
电气 Electrical system	遮阳帘 Sunshade curtain	○
	声光报警器 Acousto-optic alarm	○
	急停开关 Emergency stop switch	●
	24V电源接口 24V DC outlets	●
	后视摄像头 Rear view camera	●
	驾驶室前顶灯 Cab front light	●2个 2pcs
	动臂工作灯 Boom light	●2个 2pcs
	转台灯 Upper frame light	●2个 2pc
	尾灯 Tail lights	●2个 2pc
	牌照灯 License plate light	●1个 1pc
	燃油加注泵 Refilling pump	○
	GPS	●
其他 Others	AM/FM收音机 AM/FM radio	●
	驾驶室后视镜 Cab rear mirror	●1个 1pc
	扶手后视镜 Handrail rearview mirror	●2个 2pc
	支腿 Outrigger	○

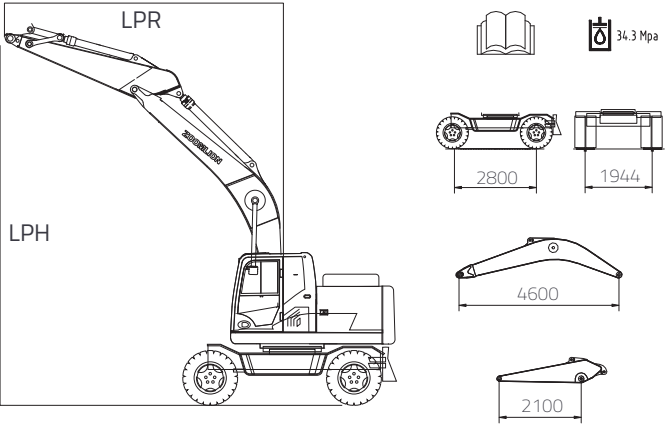
● 标配 Standard    ○ 选配 Optional

# 起吊能力表

## LIFT CAPACITY

在规定的起吊点半径和高度下，不要起吊大于额定值的负载。  
Do not attempt to lift or hold any load that is greater than these rated values at their specified lift-point radius and height.

起吊点位于铲斗在斗杆上安装销轴的中心。  
The lift point is located at the centreline of the bucket pivot mounting pin on the arm.



LPH	额定起吊能力（kg） Rated lift capacity (kg)																
	LPR																
	1.5m		2.0m		3.0m		4.0m		5.0m		6.0m		7.0m				
m	纵向 End	侧向 Side	纵向 End	侧向 Side	纵向 End	侧向 Side	纵向 End	侧向 Side	纵向 End	侧向 Side	纵向 End	侧向 Side	纵向 End	侧向 Side	纵向 End	侧向 Side	m
7.0															*1981	*1981	4274
6.0									2678	1639					*1682	1354	5358
5.0									2706	1664	1774	1774			*1553	973	6077
4.0							*3947	2577	2649	1612	1781	1781			1411	760	6571
3.0					*6033	4079	3939	2375	2539	1513	1732	1732			1241	636	6880
2.0							3671	2141	2402	1390	1665	1665	1164	577	1150	567	7032
1.0							3424	1928	2271	1273	1594	1594	1137	551	1122	541	7038
0					5657	2930	3256	1784	2169	1182	1537	1537			1153	556	6897
-1.0			*4139	*4139	5602	2886	3184	1709	2115	1132	1504	1504			1254	618	6602
-2.0	*5587	*5587	*6628	*6628	5643	2919	3179	1715	2106	1125	1517	1517			1463	751	6127
-3.0	*8360	*8360	*8411	7103	5764	3016	3240	1766	2157	1171					1883	1017	5424
-4.0					*4421	3206	*3197	1911							*2563	1643	4378

标有星号(\*)的值受液压能力限制,见注2。  
Capacities marked with an asterisk (\*) are limited by hydraulic capacities. See Note 2.

- 吊索和任何辅助起吊装置的重量应从额定载荷中扣除，以确定可提升的净载荷。  
The mass of slings and any auxiliary lifting devices shall be deducted from the rated load to determine the net load that may be lifted.
- 起吊能力是基于机器位于坚实的，均匀的支撑表面，使用者应考虑到松软或不平整的地面等工作条件。  
Lift capacities are based on the machine standing on a firm, uniform supporting surface. The user shall make allowances for job conditions such as soft or uneven ground.
- 操作人员在操作机器前，应充分熟悉制造商提供的操作手册和安全手册。  
The operator should be fully acquainted with the *Operator's Manual* and the *Operating Safety Manual* furnished by the manufacturer before operating the machine.
- 注1：所示的起吊能力是没有启用增压模式的。  
NOTE 1 Lift capacities shown are without the power boost feature engaged.
- 注2：所示的起吊能力不超过最小倾翻载荷的75%或液压能力的87%。  
NOTE 2 Lift capacities shown do not exceed 75% of minimum tipping loads or 87% of hydraulic capacities.
- 注3：最不稳定的位置在侧面。  
NOTE 3 The least stable position is over the side.
- 注4：起吊能力仅适用于制造商最初制造并正常配置的机器。  
NOTE 4 Lift capacities apply only to the machine as originally manufactured and normally equipped by the manufacturer.
- 注5：整机总质量为14600kg，包括4.6m的动臂、2.1m的斗杆、2050kg的配重、所有的工作液体和一个75kg的操作人员。  
NOTE 5 The total mass of the machine is 14600kg. Included in 4.6m boom, 2.1m arm, 2050kg counterweight, all operating fluids and a 75kg operator.
- 注6：起吊能力符合ISO 10567:2007。  
NOTE 6 Lift capacities are in compliance with ISO 10567:2007.