

ZOOMLION TECHNOLOGY WITH INGENUITY AND CARE



The world's leading full-process smart mining machinery manufacturing factory

Zoomlion Mining Machinery Company possesses globally leading intelligent production lines featuring smart, environment-friendly and internationalized technologies, covering high-end machinery for the full process of open-pit mining, including "drilling, digging, loading, hauling and crushing". Built with advanced processing and assembly techniques and rigorous quality control, each machine delivered embodies the highest level of quality.



ZOOMLION

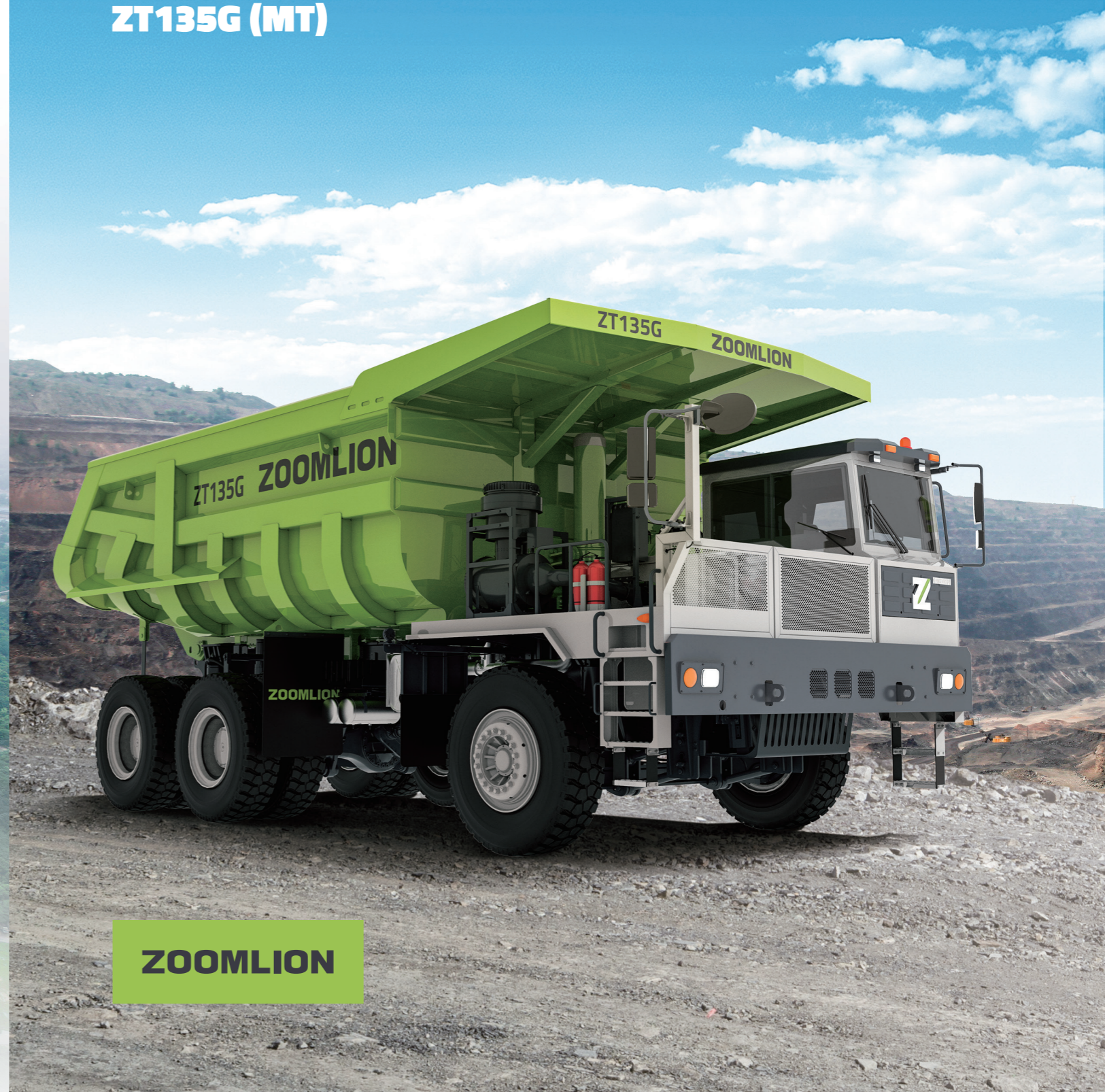
Zoomlion Heavy Industry Science & Technology Co.,Ltd.

ADD: Smart City Headquarters Building, No.613 Naqiu Road, Wangcheng District, Changsha, Hunan, China Email: earthmoving@zoomlion.com
Copyright © 2025 Zoomlion. All rights reserved. Reproduction and copying of any part of contents is not allowed for any purposes without Zoomlion's approval.
Note: Materials and specifications are subject to change without notice. Featured machines in photos may include additional equipment.



ZOOMLION MINING DUMP TRUCK

ZT135G (MT)



ZOOMLION

VISION CREATES FUTURE

ZT135G, Off road dump trucks are the flagship product of Zoomlion Heavy Industry Science and Technology Co., Ltd. They are equipped with Yuchai YCK16775-T300, a high-power engine, an 8-speed MT manual transmission, a large capacity cargo compartment as standard, and high transportation efficiency. Adopting a composite fillet welded box section frame, both front and rear axles are equipped with oil and air suspension, fully hydraulic steering, U-shaped cargo compartment structure, and all steel radial tires, with a driving type of 6x4.



Engine Rated Power :

570 kW

Curb Weight :

45000 kg

Rated Payload :

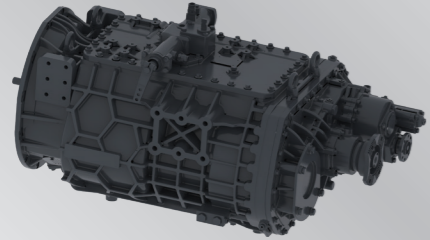
92000 kg

Capacity(standard) :

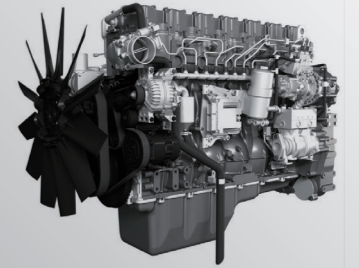
55m³

CONFIGURATION & EFFICIENCY

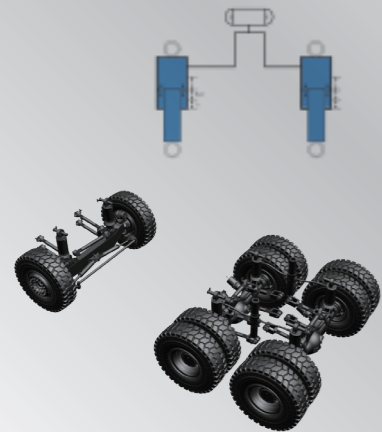
POWER SYSTEM



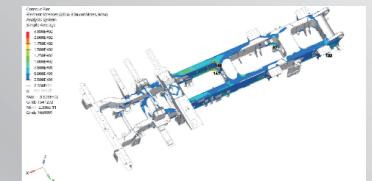
Adopt Z8S330A transmission with input torque above 3300N·m. This gearbox is designed with a high safety factor, and its housing and gears are of high strength. It uses active lubrication to increase gear life and overall transmission efficiency, meeting the needs of harsh working conditions in mines.



The Yuchai 16L high-horsepower electronically controlled high-pressure common rail engine boasts a rated power output of 570 kW and a maximum torque of 3200 N·m. With the auto dust removal air filter, no human labor is required. The electrically controlled cooling fans and the high-power parallel radiator deliver supreme cooling capability. The three-stage filter for the fuel supply system fully protects the engine and the high-pressure common rail injection system.



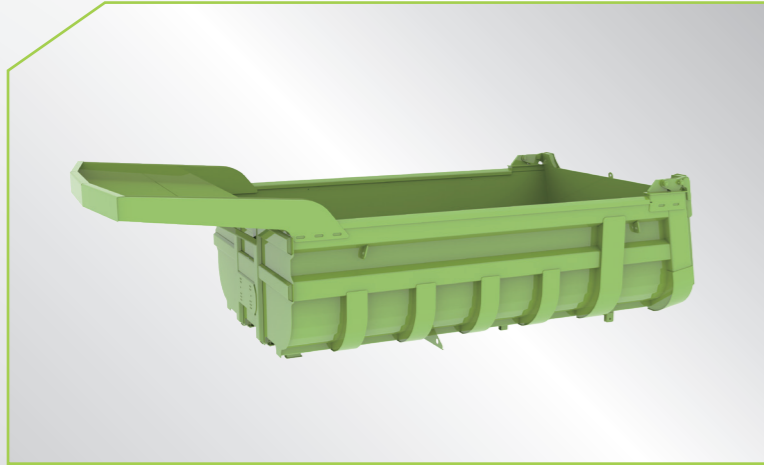
The cutting-edge integrated dual-axle air suspension system solves the industry-wide problem of rear axle tire slippage. The machine body height, suspension stiffness, and damping characteristics are all adjustable for different road surfaces.



The large-section box-shaped frame with high web improves torsion resistance by 20%, delivering a safety factor of over 3.5 for the main parts under extreme conditions.

The structural parts has a service life exceeding 5 years, which extends uptime and reduces maintenance costs.

SAFE AND RELIABLE

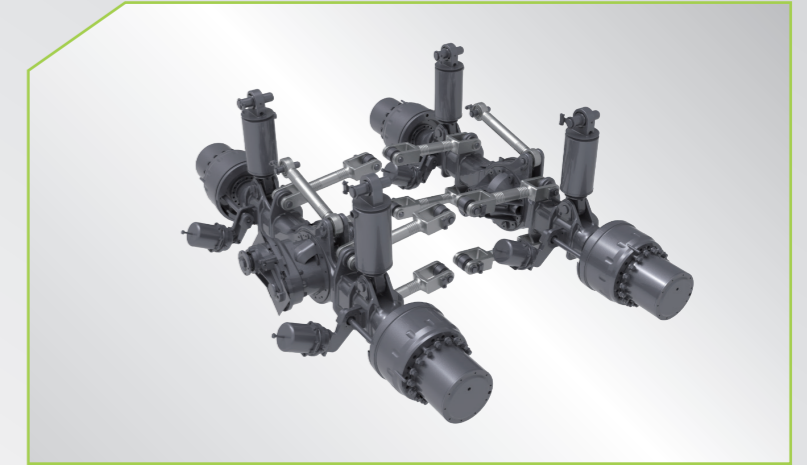


The U-shaped skeleton structure improves the anti-smashing and anti-cracking ability, with a strength increase of 15%.

The skeleton structure is light-weight, 10% lighter than traditional bodies.

The U-shaped curved surface is resistant to sticking and allows for faster unloading.

The U-shaped design of the body offers an expanded field of vision for observing tire movement during turns, enhancing safety.



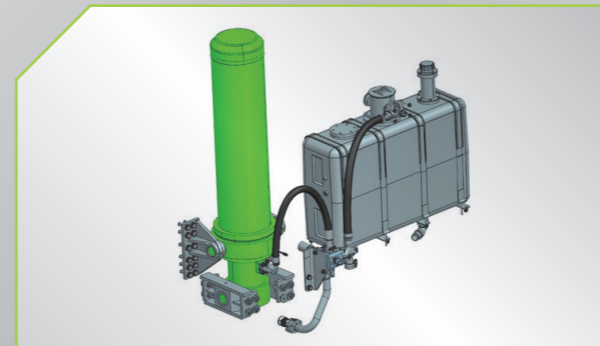
The full hydro-pneumatic suspension enables variable spring stiffness, impact resistance to material loading and fewer faults, thus improving driving comfort and reliability.

The intermediate and rear suspensions adopt a gas-oil separated balance design, which reduces the impact of complex road surface on the machine.

COMFORTABLE CONTROL



The offset narrow body cab offers an expansive field of vision. It features a composite bottom plate design made from reinforced steel plates and rubber sponge, which helps minimize noise.



The single cylinder front lift system is mature and reliable. The hydraulics adopts a large-flow hydraulic pump and a high-power valve group, with lifting time less than 30s and system temperature controlled below 78°C.

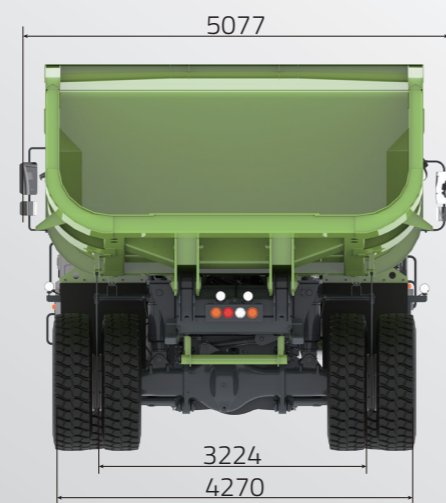
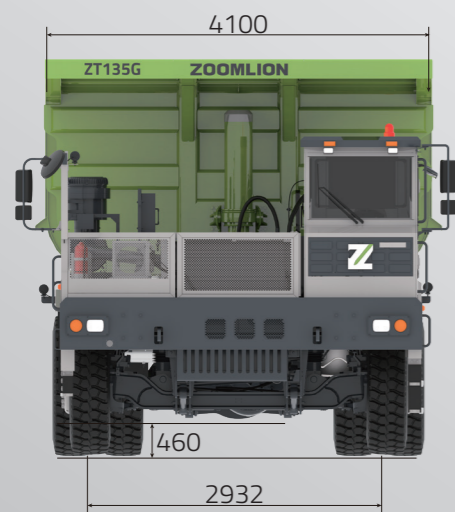
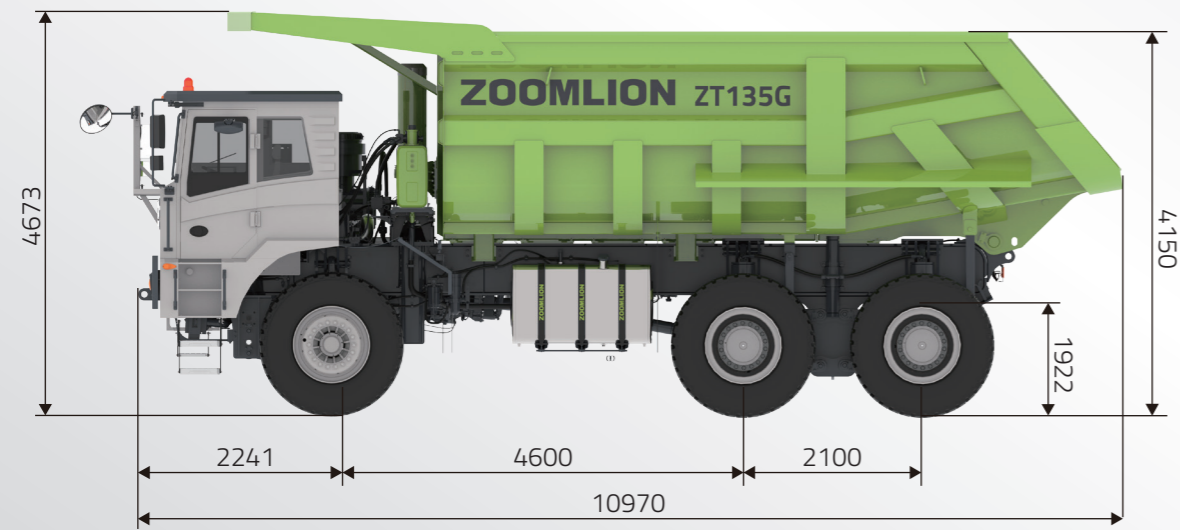


The LCD instrument cluster and on-board computer display the machine status in real time. The all-in-one multimedia system features radio, Bluetooth, GPS, reversing camera, and USB expansion functionality.



The standard emergency stop button allows for an immediate shutdown in emergencies, ensuring the safety of both personnel and equipment.

TECHNICAL PARAMETERS



Main Parameters	Unit	Value
Curb weight	t	45
Rated payload	t	92
Max. speed	km/h	40
Max. gradeability	%	38
Min. turning radius	m	13
Axle payload	t	41+50+50
Steering system	/	Fully hydraulic
Tires	/	480/95R29
Engine model	/	YCK16775
Emission standard	/	China Non-Road Stage IV
Engine displacement	L	15.939
Rated power	kW	570
Max. torque	N·m/rpm	3200/1100-1500
Transmission model (MT)	/	Z8S330A
Capacity (Struck)	m ³	55
Capacity (Heaped 2:1)	m ³	66

System	Features	ZT135G	
Power system	Engine	Yuchai 15.93L	
	Engine emission	NR4	
	Power (kW/rpm)	570/1900	
	Three-stage diesel filter	●	
	Air filter	● Backblowing air filter	
	Body exhaust heating	●	
	Fuel tank (Select one)	Dual-chamber 1000L	○
		Single-chamber 1000L	●
Muffler	●		
Electrical system	Backup alarm	●	
	Emergency stop button	●	
	24V Power port	●	
	Monitoring+ entertainment (Select one)	Entertainment	● Multimedia screen
		Rearview camera	○ Reversing video camera +multimedia screen
		Cameras (Front, rear, left and right)	○ Four channel monitoring+multimedia screen
	Roading lighting	●	
	Rotating beacon on the cab top	●	
	Backup lighting (Left, right and rear)	●	
	Fog lights (Front and rear)	●	
	GPS	●	
	Battery	180Ah*2	
Hydraulics	Lift cylinder (single cylinder front lift)	●	
	Full hydraulic steering	●	
	Emergency steering system	●	
	Emergency lifting system	●	

● Standard
○ Optional

Category	Features	ZT135G	
Drive train	Transmission	Manual transmission (MT)	● Z8S330A gearbox
		Axle	ZOOMLION 41t+50t+50t
	Tire (Select one)		● Front and rear: 480/95R29-302MAX
			○ Front and rear: 480/95R29
			○ Front and rear:480/95R29
		Lubrication-free drive shaft	●
Braking system	Service brake	● Front and rear independent dual-circuit air control	
	Parking brake	● Drum brake	
	Hydraulic retarder	●	
	Engine brake	●	
	AI-integrated brake	●	
Body assembly	Body (select one)	Tailgate-short overhung	Struck 55m ³ , Heaped 66m ³
		Tailgate-long overhung	Struck 55m ³ , Heaped 66m ³
		No tailgate-short overhung	Struck 55m ³ , Heaped 66m ³
		No tailgate-long overhung	Struck 55m ³ , Heaped 66m ³
	Tire guard	○	

● Standard
○ Optional

Category	Features	ZT135G	
Cab	Narrow body left-hand drive cab	●	
	FOPS	●	
	0.5kg fire extinguisher	●	
	Seat(select one)	Mechanic suspension seat	●
		Air suspension seat	○
	Air conditioner (cool & warm)	●	
	Emergency hammer	●	
	7-inch LCD instrument	●	
	Glass defrosting	●	
	Three-point seat belt	●	
	Rear seat	●	
	Rock ejector	●	
	Covering parts	10kg fire extinguisher	○
Engine right fender assembly		○	
Engine left fender assembly		○	
Wheel chock		Iron	○
		Rubber	○
Suspension system	Front suspension	● Hydro-pneumatic suspension	
	Rear suspension	● Hydro-pneumatic suspension	
Others	Attached tools (one set for five vehicles)	●	
General Optional Configuration	Automatic sprinkler system	○	
	Automatic fire extinguishing system	○	
	Driver fatigue detection system	○	
	Customized painting	○	
	High voltage proximity alarm	○	

● Standard
○ Optional

Category	Features	ZT135G	
General Optional Configuration	Guardrails	Fuel tank guardrail assembly	○
		Front bumper beam assembly	○
		Battery guardrail assembly	○
	Cab oxygen generator	○	
	Centralized lubrication system	○	
	Intelligent weighing system	○	
	One spare tire (including rim)	●	
	Radio station	○	
	First-aid kit	○	
	Cold areas optional package(Ambient temperature $\geq -20^{\circ}\text{C}$)	Cold start system	Highland version
Plain version			○
Low-temperature hydraulic oil		○	
Electric fuel heater module		○	
Extreme cold areas optional package (Ambient temperature $\geq -40^{\circ}\text{C}$)	Cold start system	Highland version	○
		Plain version	○
	Electric fuel heater module	○	
	Cab heating	○	
	Low-temperature battery	○	
	Ultra-low temperature hydraulic oil	○	
	Low-temperature hydraulic rubber hose	○	
	Heat-resistant tire	○	
High-temperature areas optional package (Ambient temperature $\geq 40^{\circ}\text{C}$)	68 Hydraulic oil	○	
	85w-140 Gear oil	○	
	Expansion tank pressure cap	○	
Highland package	High-altitude engine	○	
	High-altitude fuel pump	○	
Desert/Mud package	OTT track	○	

● Standard
○ Optional