

ZOOMLION TECHNOLOGY WITH INGENUITY AND CARE



The world's leading full-process smart mining machinery manufacturing factory

Zoomlion Mining Machinery Company possesses globally leading intelligent production lines featuring smart, environment-friendly and internationalized technologies, covering high-end machinery for the full process of open-pit mining, including "drilling, digging, loading, hauling and crushing". Built with advanced processing and assembly techniques and rigorous quality control, each machine delivered embodies the highest level of quality.

ZOOMLION



МАКС МАШИНЕРИ ИНДАСТРИ ХХК

Хаяг: Улаанбаатар, Чингэлтэй, 5-р хороо, 6 хороолол, 15141,
самбуугийн гудамж, 24, "М ПЛАЗА" 9 давхар 906 тоот

E-Mail : info@maxmachinery.mn

Утас : 7701-6262

Website : www.maxmachinery.mn



ZOOMLION ELECTRIC DRIVE DUMP TRUCK

ZTE210



ZOOMLION

VISION CREATES FUTURE

ZTE210

Engine Rated Power: 1045 kW @ 1800 rpm

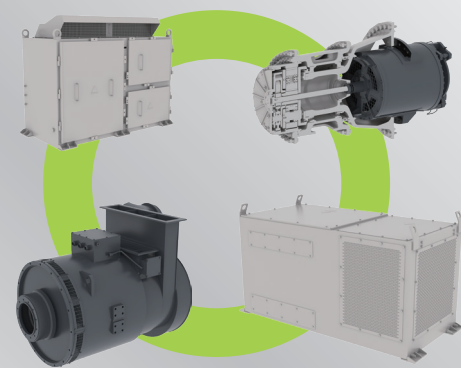
Rated Payload: 120000 kg

Curb Weight: 90000 kg

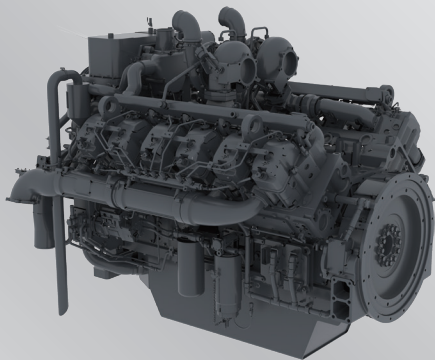
Body Capacity: 70 m³



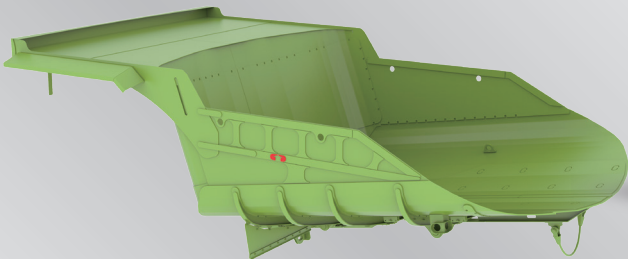
HIGH EFFICIENCY AND ENERGY SAVING



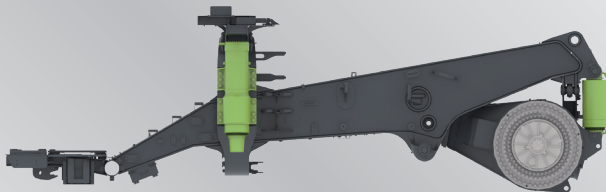
The globally advanced third-generation AC-DC-AC electric drive system: Standing two generations ahead of mechanical transmission technologies, it delivers 10% greater rimpull than DC-powered vehicles. Paired with advanced driving control strategies, it remarkably improves the operational safety of mining trucks.



The YUCHAI electronically controlled V12 engine delivers robust performance and exceptional reliability. Generating up to 1,450 horsepower, it offers the comprehensively strongest power among mining trucks in the same tonnage, achieving a maximum speed of 51 km/h, together with high climbing speed, and 10% improvement in haulage efficiency.



It comes standard with a 70 m³ large-capacity lightweight body; The main body is made of NM450 material and the stiffening plates are made of Q690E material, providing superior durability; Featuring a large-arc transition curve design, it ensures excellent material centering, minimal adhesion, and a 20% increase in dump speed.

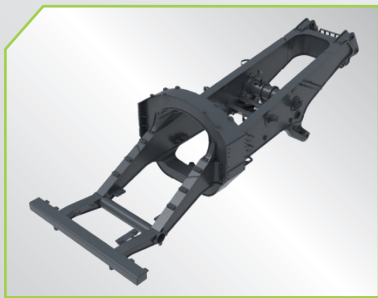


Hydro-pneumatic suspension: Strong load-bearing capacity, low failure rate, and adaptable to various complex working conditions

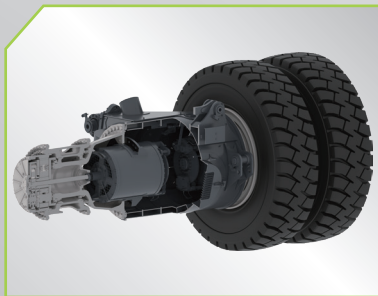
SAFE AND RELIABLE



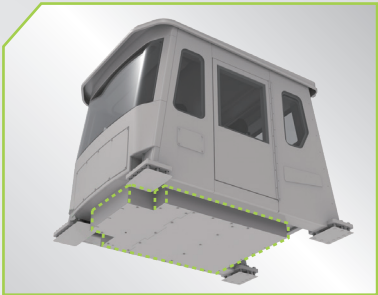
Rationally designed safety configurations:
Full-automatic fire extinguishing system with 12 emergency stop buttons positioned across the fire suppression points on the machine



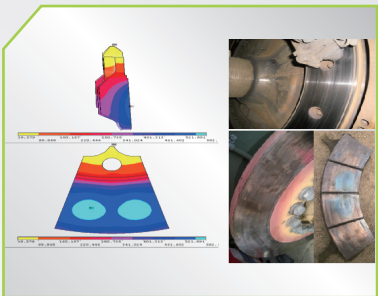
Two-longitudinal and four-transverse box-shaped welded frame:
The main body is crafted from high-strength alloy steel, with cast steel applied to stress-concentrated areas, ensuring a designed service life exceeding 60,000 hours.



Long-life wheel-rim reducer with strong impact resistance.

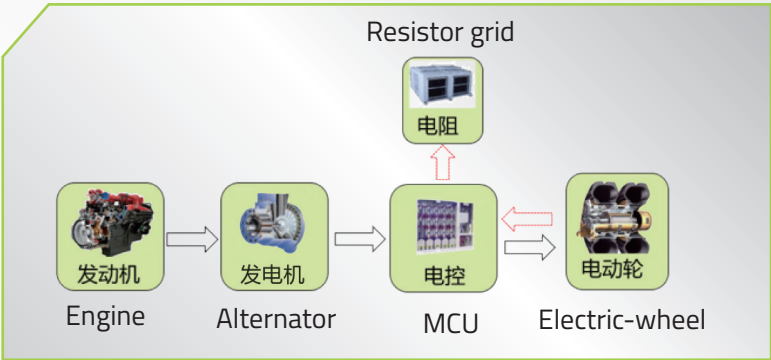


Cab protection in case of tire blowout:
Featuring a bottom box-shaped structure, it will effectively protect the safety of driver.



Hydraulic mechanical braking:
Alloy forged steel discs paired with copper-based powder metallurgy friction pairs ensure a service life of up to 10,000 hours.

Dual circuit hydraulic brake:
With dual-circuit hydraulic braking, it is equipped with service braking, loading braking, parking braking and emergency braking functions.



Electric braking:
With a power output of up to 1440 kW without mechanical contact, it ensures high reliability.

COMFORTABLE CONTROL



Cab: Integrated ROPS and FOPS structures, with soundproof design on the cab frame interior and bottom, ensuring low noise levels.



Air-cushioned seat with built-in electric pump, significantly reducing road-induced vibrations.

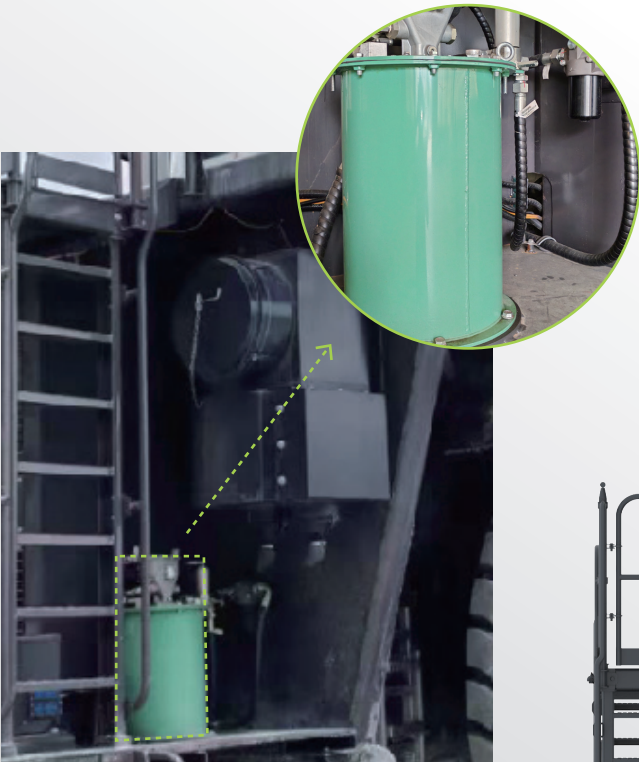


Ergonomic layout: Easy to operate.



Pressurization system with effective external dust isolation.

CONVENIENT MAINTENANCE

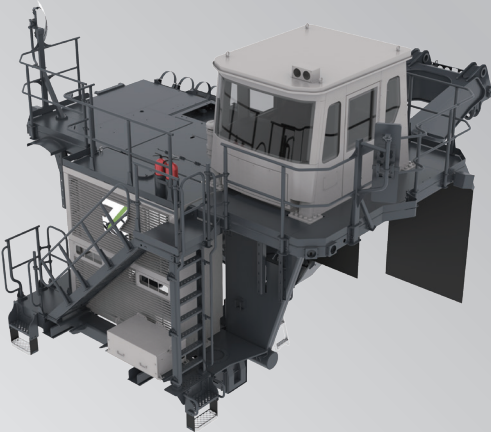


Centralized refilling:
One-stop completion of oil refilling (lubricating grease, coolant, hydraulic oil, etc.)

Single-line centralized lubrication system with adjustable displacement at the oil lubricator outlet.



Fuel fillers are distributed on both sides of the frame, positioned close to the ground for quick refueling.

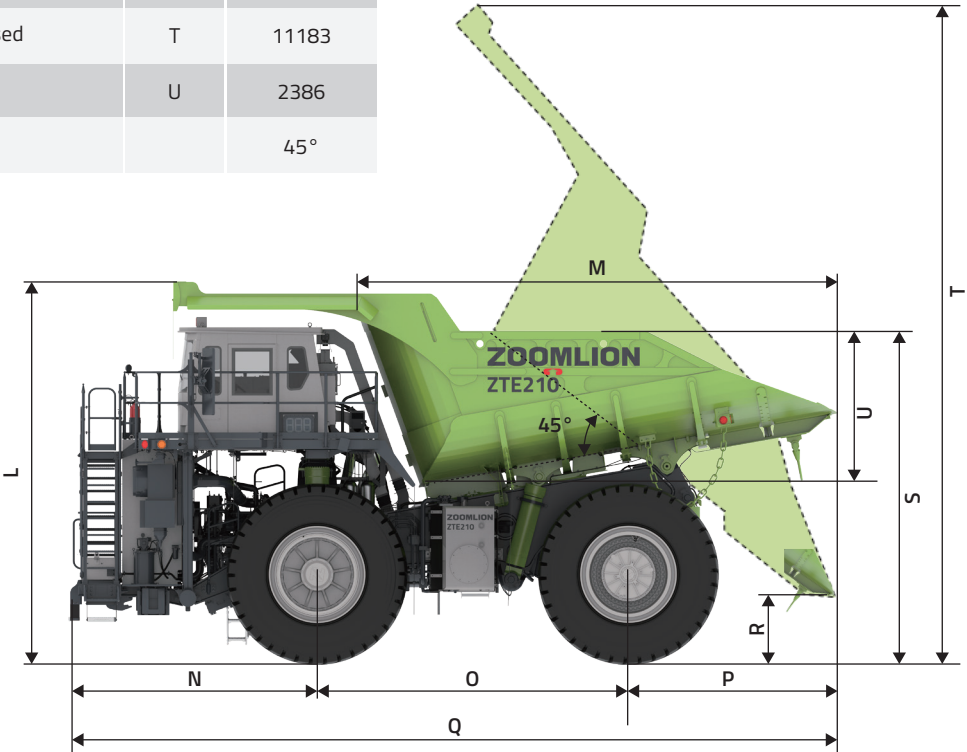
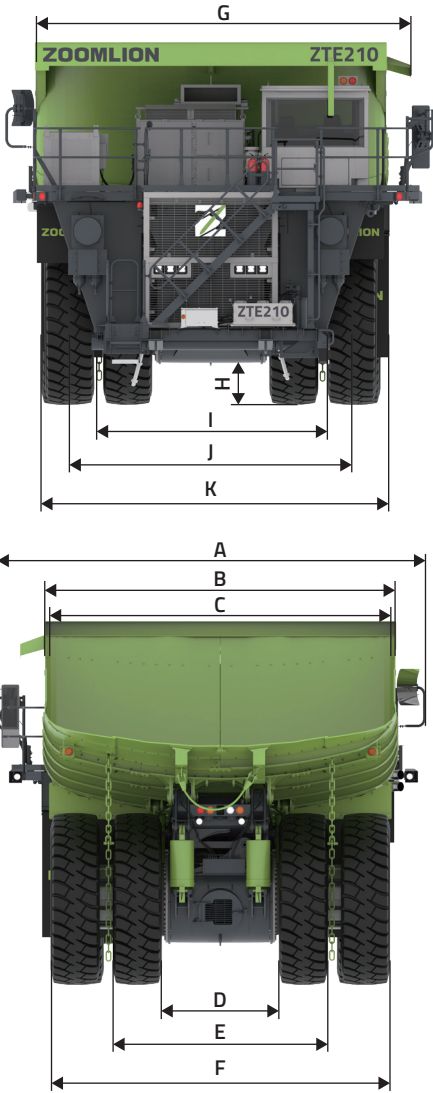


Convenient walkways:
One primary boarding ladder and two auxiliary ones, accompanied by a generously spacious platform.

TECHNICAL SPECIFICATIONS

CATEGORY	ITEMS		UNIT	ZTE210
WEIGHT PARAMETERS	Total machine weight		kg	210000
	Rated payload		kg	120000
	Empty machine weight		kg	90000
MASS DISTRIBUTION	Empty	Front axle	kg	45000 (50%)
		Rear axle	kg	45000(50%)
	Loaded	Front axle	kg	69300 (33%)
		Rear axle	kg	140700 (67%)
POWER PARAMETERS	Engine model		/	YC12VTD1450-T300
	Engine rated power		kW/ rpm	1045/1800
	Engine max. torque		Nm/rpm	6105/1300
	Engine displacement		L	39.2
	Emission standard		/	GB 20891-2014
	Drive type		/	4×2
	Tire		/	30.00R51
DRIVING PARAMETERS	Max. speed		km/h	51
	Min. turning diameter		m	24.6
	Max. gradeability		%	24
	Min. ground clearance		mm	570
MAINTENANCE CAPACITY	Fuel tank		L	1200
	Hydraulic tank		L	650
	Cooling system		L	300
	Engine oil		L	215
	Gear oil tank		L	50×2
BODY CAPACITY	Heaped (SAE 2:1)		m³	70

PARAMETER DISCRIPTIONS	CODE	ZTE210 (mm)
Overall machine width	A	7100
Outside body width	B	5832
Inside body width	C	5750
Inner front tire width	D	2130
Centerline rear dual tire width	E	3958
Overall tire width	F	5810
Operating width	G	6230
Min. ground clearance	H	725
Inner front tire width	I	3861
Centerline front tire width	J	4691
Front tire width	K	5520
Overall machine height	L	6050
Inside body length	M	7730
Front overhang	N	3770
Wheelbase	O	5000
Rear overhang	P	3295
Overall machine length	Q	12065
Dump height	R	1473
Loading height	S	5300
Overall height – body raised	T	11183
Inside body height	U	2386
Dump angle		45°



SYSTEM	STANDARD EQUIPMENT	ZTE210
POWER SYSTEM	Fuel filter stages	3
	Air filter	●
	Engine independent cooling	●
	Coolant level indicator	●
	Radiator fan guard	●
	Engine oil filter	●
	Removeable powertrain	●
	Engine emergency stop button - ground	●
	Drive shaft guard	●
	Fuel tank	●
ELECTRICAL SYSTEM	Back-up camera	●
	Back-up alarm	●
	Emergency stop button	●
	Alternator	●
	Electric start	●
	Converter	●
	TElectric retarding system	●
	Power supply	● 24V DC
	GPS	●
	Battery	●225Ah
HYDRAULIC SYSTEM	Full-hydraulic steering	●
	Oil suction, high pressure and return-line filters	●
	Emergency steering brake	●
	Independent cooling system	●
	Automatic lubrication	●
STRUCTURAL PARTS	Frame	●
	Body	● Lightweight wear-resistant
	Body limiter	●
	Slip-resistant deck and staircase	●
	Diagonal staircase across grille	●
	Protective deck handrails	●
	Slip-resistant walkways	●
	Engine access platform	●
CHASSIS	Front suspension	● Hydro-pneumatic
	Rear suspension	
	Dual circuit brake	●
	Dry disc brake	●
	Tire	●30.00R51
	Service brake	● Full-hydraulic (with auto-activation)
	Hoist and traction interlock device	●
	Braking and traction interlock	●
	Parking brake	●
	Power steering system	Automatic secondary steering system
CAB	Integral ROPS/FOPS cab	●
	Pressurization system	●
	On-board monitor	● 12.1-inch LCD

SYSTEM	STANDARD EQUIPMENT	ZTE210
CAB	Instrument	● 12.3-inch set
	Shock-absorption seat	● Adjustable
	Three-point seat belt	●
	Cup holder	●
	Safety hamme	●
	Air conditioner	●
	Fire extinguisher	●
	Passenger seat	●
	Sunshade curtain	●
	Sun visor (adjustable)	●
	Power window	●
	Tilt and telescoping steering column	●
	Floor mat	●
	Radio	●
	Cigarette lighter	●
	Storage bag	●
	Coat hook	●
	Glass defroster	●
	Left rearview mirror	● Heatable flat mirror
	Right rearview mirror	● Heatable flat mirror
OTHER	Horn	●
	Body safety rope	●
	Quick refueling system	●
	Maintenance power lockout	●
	Rock ejector	●
	Fuel tank ladder	●

SYSTEM	ADAPTIVE OPTIONAL EQUIPMENT	ZTE210
GENERAL	Centralized refill system	○
	Wear-resistant body liner plate	○
	Body heating	○
	Tire	○33.00R51
	Automatic centralized fire extinguishing	○
	Customized body	○
	Quick-change hub	○
	Tire temperature monitoring system	○
	Tire pressure monitoring system	○
	Smart weighing system	○
EXTREME-COLD KIT (TEMPERATURE≥-40)	360° surround view camera	○
	Engine oil circuit heater	○
	Engine cylinder block pre-heater	○
	Engine oil heater	○
	Battery heater	○
	ELV heater	○
	Hydraulic oil heater	○
	Air heater of cab	○