

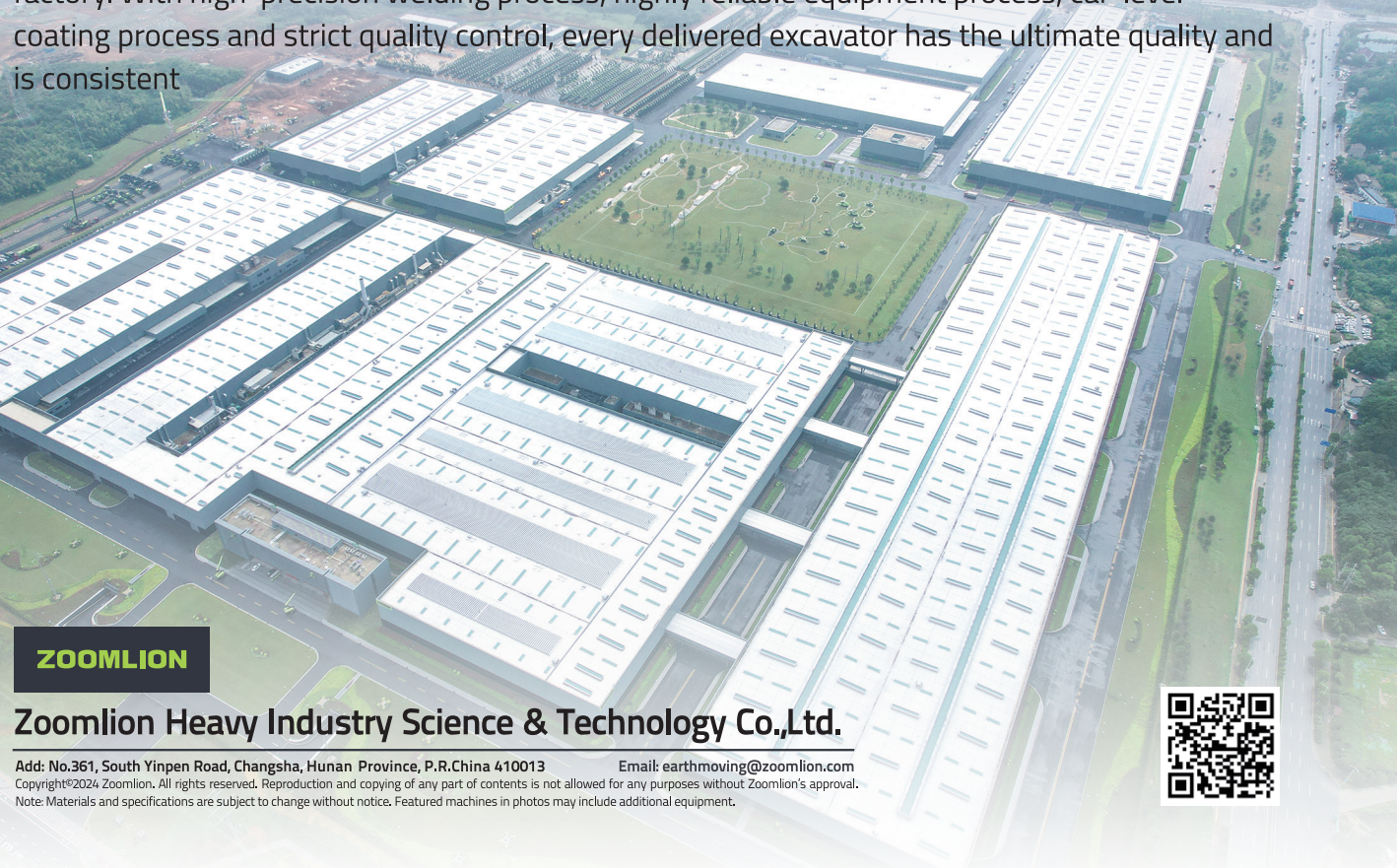
大智造 HIGH TECH MANUFACTURING

全球领先的全流程智能制造工厂
The world's leading full-process intelligent manufacturing plant



从一块钢板到一台挖掘机，中联智慧产业城土方机械园区拥有行业领先的智能化、柔性化的全流程智能制造挖掘机工厂，以高精度的焊接工艺、高可靠的装备工艺、轿车级别的涂装工艺和严苛的品质管控，让每一台交付的挖掘机都具备极致品质，始终如一

From a steel plate to an excavator, Zoomlion Smart Industry City Earthmoving Machinery Park has an industry-leading intelligent and flexible full-process intelligent manufacturing excavator factory. With high-precision welding process, highly reliable equipment process, car-level coating process and strict quality control, every delivered excavator has the ultimate quality and is consistent



ZOOMLION

Zoomlion Heavy Industry Science & Technology Co.,Ltd.

Add: No.361, South Yinpen Road, Changsha, Hunan Province, P.R.China 410013 Email: earthmoving@zoomlion.com
Copyright©2024 Zoomlion. All rights reserved. Reproduction and copying of any part of contents is not allowed for any purposes without Zoomlion's approval.
Note: Materials and specifications are subject to change without notice. Featured machines in photos may include additional equipment.



中联重科75吨级 履带式液压挖掘机

ZOOMLION 75-TONNAGE CRAWLER
HYDRAULIC EXCAVATOR

ZE750G



ZOOMLION





01

配置与效率
CONFIGURATION & EFFICIENCY

02

卓越矿卡适配
OPTIMIZED TRUCK MATCH

03

可靠耐用
RELIABILITY & DURABILITY

04

舒适与智能
COMFORT & INTELLIGENCE

05

维修方便
CONVENIENT MAINTENANCE

06

技术参数
TECHNICAL SPECIFICATIONS



ZE750G

发动机功率: 563 kW / 2100 rpm
操作重量: 76500 kg
斗容: 4.6~5.5 m³

Rated power: 563kW / 2100 rpm
Operating weight: 76500 kg
Bucket capacity: 4.6~5.5m³



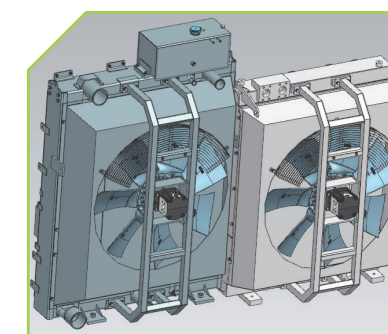
配置与效率 CONFIGURATION & EFFICIENCY



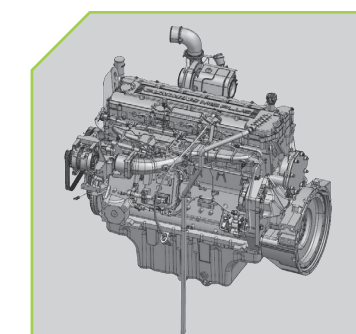
节油高效 Fuel saving and high efficiency

ZE750G挖掘机是我公司为适应矿山市场需求，凝聚多年挖掘机设计制造经验并结合国际先进设计技术开发的高可靠性挖掘机。该产品采用全新正流量控制系统，结合发动机、油泵低速大扭矩控制技术，整机相对上代机型效率提升的同时，油耗更低，配合强大的大挖掘力，重载作业更高效。

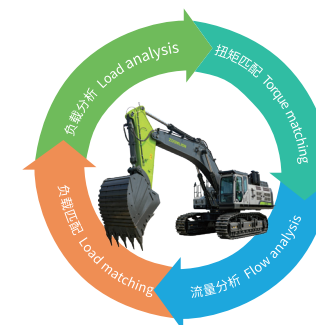
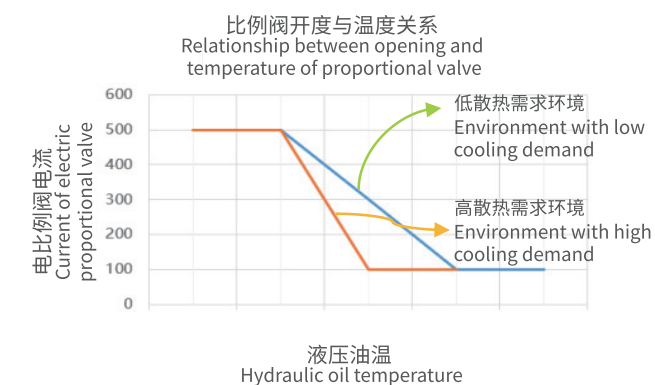
ZE750G excavator is a high reliability excavator developed by our company in order to meet the needs of the mining market, with many years of experience in excavator design and manufacturing combined with international advanced design technology. By adopting a new positive flow control system, combined with low-speed and high-torque control technology of engine - oil pump, the whole machine is more efficient than the previous generation model, while the fuel consumption is lower, with powerful digging force and more efficient heavy duty operation.



双独立散热系统
冬季低温低油耗，夏季高温高散热
Dual independent cooling systems
Low temperature and low fuel consumption in winter, high heat dissipation in summer



发动机功率增大44%
提供更稳定强劲的动力
44% more engine power
Provide more stable and strong power



大泵低转速策略，确保发动机运转在经济油耗区，更节油；
E-COT控制系统：分泵控制+分工况控制，同等效率下，油耗降低8%

Large pump low rotation strategy to ensure that the engine runs in the economical fuel consumption zone, more fuel saving;
E-COT control system: separate pump control + separate condition control, with the same efficiency, fuel consumption is reduced by 8%

卓越矿卡适配

OPTIMIZED TRUCK MATCH



ZE750G标配5.1m³大斗, 最佳匹配中联的ZT96A、ZT115A、ZT125G矿卡。

ZE750G Standard equipped with a large, 5.1m³ bucket, the ZE750G is designed to optimally match with popular ZT96A, ZT115A, and ZT125G trucks.

	ZT96A	ZT115A	ZT125G
ZE750G 5.1m ³	30m ³	34m ³	50m ³
预计装满斗数 Estimated number of filled buckets	6-7	7	10-11
预计时间 Estimated time	2min	2min20s	3min20s

物料密度1600kg/m³

Material density 1600kg/m³



可靠耐用 RELIABILITY & DURABILITY

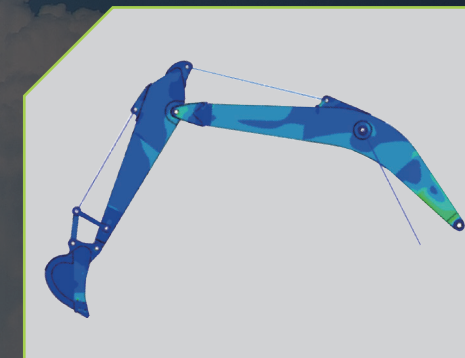
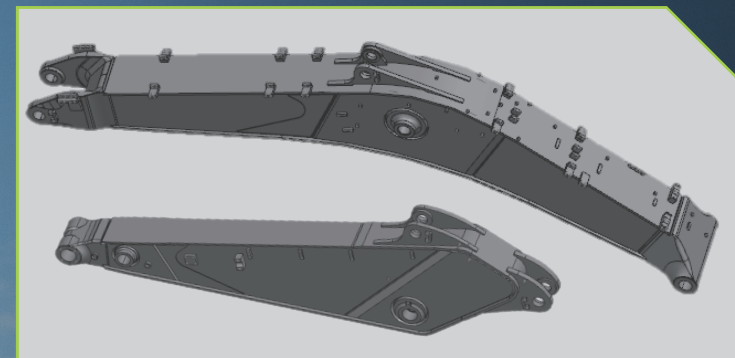
行业内优秀的结构件

Excellent structural parts in the industry



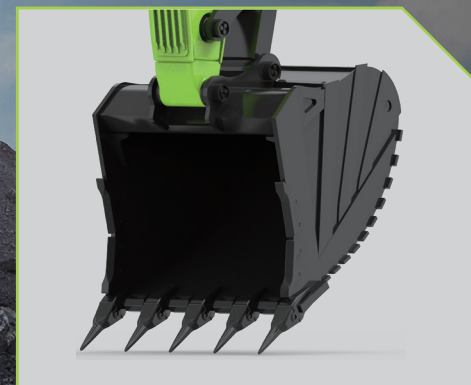
转台D型边梁，整体强度更高
加强型工作装置，一体成型大截面设计，适应性更强
行业同吨位大斗杆“马头”500mm、大销轴直径140mm，可靠性更高
经过CAE分析、应力复测、疲劳试验、机器人焊接，多角度验证，可靠性更高

Upper frame match with D type side beam, the overall strength is higher
Enhanced work equipment, integrated molding large section design, more adaptable
Big arm end 500mm, big pin shaft diameter 140mm, higher reliability
According to CAE analysis, stress retest, fatigue test, robot welding, multi-angle verification, higher reliability



加强优化后的大结构件经市场实际验证，扎实可靠，耐用有保障

Strengthened and optimized large structural parts have been verified by the market, solid and reliable, durable and guaranteed



ZE750G标配5.1方强化斗，可选配5.5方土方斗，进一步提升装载效率；
双圆弧斗型设计，减小挖掘阻力；
最大挖掘力高达388kN，挖掘入料更轻松，开采效率更高。

ZE750G standard 5.1 m³ reinforcement bucket and 5.5 m³ earthwork bucket can be selected to further improve loading efficiency;
Double arc bucket design, reducing digging resistance;
The maximum digging force is 388kN, making it easier to dig with higher efficiency.



舒适与智能 COMFORT & INTELLIGENCE






A
Large touch screen
Rearview camera fitted as standard
大尺寸触摸屏
标配后视摄像头



B
Push start
一键启动



C
Cup holder
杯托

- USB 
- Bluetooth(蓝牙) 
- Data Transmission (数据传输) 



D
Highly integrated control panel
高集成化 控制面板



E
Special suspension seat of large stroke
full wrapping experience
大行程专用悬浮座椅全包裹体验



F
Compared with the previous generation cab,
the cooling effect of the new generation cab is
increased by more than 19%
新一代驾驶室相比上一代驾驶室，制冷降温
效果提高19%以上



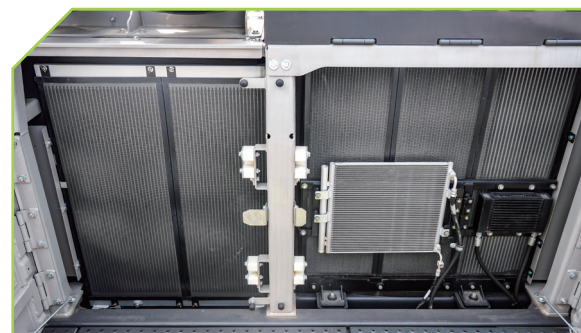
G
Superb all-round visibility thanks to large
window areas,
with increased glass transmittance above 11%
The sunshade is standard equipment
大面积环绕式玻璃玻璃通透率提升11%以上
标配遮阳帘

维修方便 CONVENIENT MAINTENANCE



液压风扇, 可实现反转, 清理灰尘更轻松

The hydraulic fan can rotate reversely for easier dust removal.



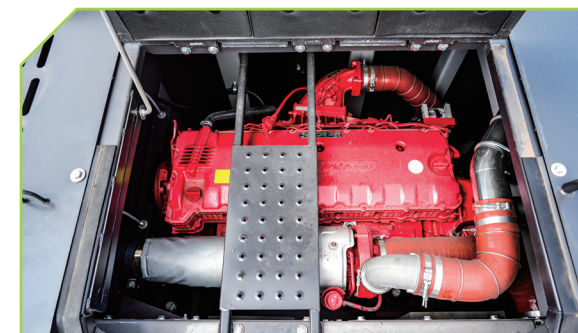
机油滤、柴油滤、先导滤的检视与保养均伸手可及, 实现一站式保养。

Engine fuel filters, oil filter and pilot filter are easily accessible at ground level, achieving "one-stop" inspection and maintenance.



发动机舱空间更大, 检视、维修、保养更方便;
专设维修保养踏板, 所有维保点都能轻松触及。

The engine compartment has a larger space, making inspection, maintenance, and service more convenient; With specially designed maintenance step treads, all maintenance points can be easily accessible.



主阀及回转马达管路布置空间大、管路整洁清晰, 维保简单易行;
减速机齿轮油、燃油箱、防冻液均设置远程放液口, 方便、安全。

The layout space of the main valve and swing motor pipelines is large, the pipelines are clean and clear, and maintenance is simple and easy to operate; The reducer gear oil, fuel tank, and antifreeze are all equipped with remote drain ports for convenience and safety.





YOU CAN TRUST ZOOMLION. 你可以相信中联重科

Zoomlion's service engineers are located in various key countries. According to the distribution of customers' equipment, engineers will be stationed in that country for a long time. If customers need it, our mission will be fulfilled. Every year, Zoomlion's service engineers carry out a service trip to visit new and old customers, listen to their opinions on service needs, collect their demands, Respond to reasonable demands in a timely manner.

中联重科的服务工程师分布在各个重点国家,根据客户设备分布情况,工程师长期驻点该国家,客户有需要,我们使命必达。每年中联重科服务工程师都会开展服务万里行活动,针对新老客户拜访,听取服务需求意见,收集客户诉求,及时响应合理诉求。

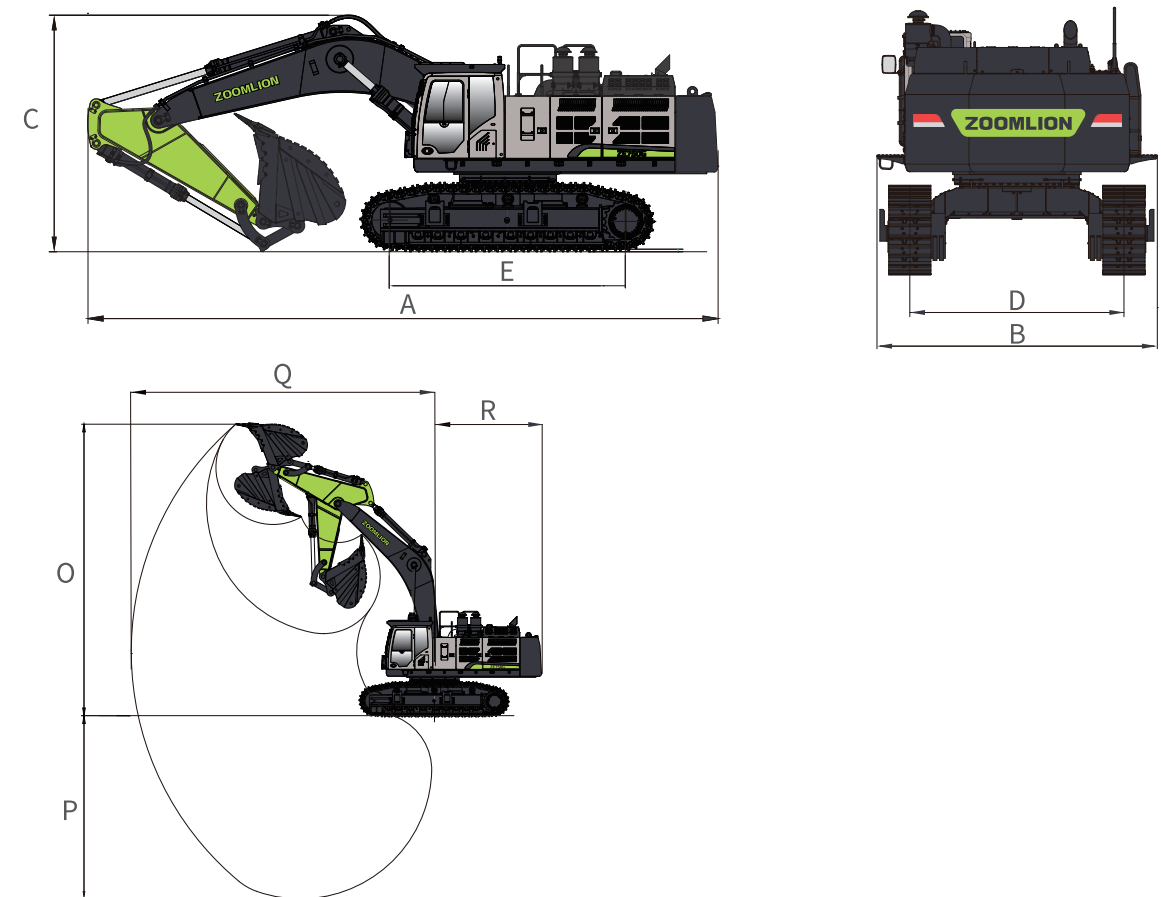


 <p>机油滤芯 Oil filter element</p> <p>保养周期延长 Maintenance interval extended by 100%</p>	 <p>燃油滤芯 Fuel filter element</p> <p>适配东南亚 Suitable for Southeast Asia</p>
<p>液压油滤芯 Hydraulic oil filter element</p> <p>保养周期延长 Maintenance interval extended by 100%</p> 	<p>专用液压油 Special hydraulic oil</p> <p>保养周期延长 Maintenance interval extended by 100%</p> 

技术参数 TECHNICAL SPECIFICATIONS

		ZE750G
发动机 ENGINE		
品牌 Brand		康明斯Cummins
型号 Model		QSM15 77C
额定功率 Rated power		563kW / 2100rpm
排量 Displacement		14.5L
液压系统 HYDRAULIC SYSTEM		
主泵 Main pump	2个变量柱塞泵 最大流量:2×490L/min	Two variable displacement piston pumps Maximum flow: 2×490L/min
先导泵 Pilot pump	1个齿轮泵 最大流量:27L/min	One gear pump Maximum flow: 27L/min
溢流阀设定 SYSTEM PRESSURE SETTING		
工作油路 Oil circuit for work equipment		34.3MPa
回转油路 Oil circuit for swing device		28MPa
行走油路 Traveling circuit		34.3MPa
先导油路 Pilot circuit		3.9MPa
底盘结构 UNDERCARRIAGE		
托链轮数量(每侧) Carrier roller		3
支重轮数量(每侧) Track roller		9
链轮数量(每侧) Sprocket		1
引导轮数量(每侧) Idler		1
行走速度 TRAVELING SPEED (HIGH/LOW)		
高 High		4.0 km/h
低 Low		2.8 km/h
最大牵引力 Maximum drawbar pull		538 kN
爬坡能力 Gradeability		70%
上车平台 UPPER STRUCTURE		
回转速度 Swing speed		7.1 r/min
回转扭矩 Swing torque		291 kNm
工作装置 WORK EQUIPMENT		
动臂长度 Boom length		7100 mm
斗杆长度 Arm length		2900 mm
铲斗容量 BUCKET CAPACITY		
标配 Standard		5.1 m ³ (强化 Reinforced bucket)
选配1 Optional 1		4.6 m ³ (岩石 Rock bucket)
选配2 Optional 2		5.5 m ³ (土方 Dirt bucket)

		ZE750G
维护保养加注容量 SERVICE REFILL CAPACITIES		
燃油箱容积 Fuel tank (full)		1000 L
发动机冷却液 Coolant (standard level)		60 L
发动机油 Engine oil (standard level)		54 L
回转装置 Slewing mechanism (standard level)		2×14 L
行走装置(每侧) Traveling mechanism (standard level)		15 L
液压系统 Hydraulic system (standard level)		700 L
液压油箱 Hydraulic oil tank (standard level)		390 L
整机尺寸 DIMENSIONS		
A总长度 Overall length		12900 mm
B总宽度 Overall width		4320 mm
C总高度 Overall height		4750 mm
D履带轨距 Track Gauge		2740/3300 mm
E履带轴距 Crawler base		4690 mm
作业范围 OPERATING RANGE		
O最大挖掘高度 Max. Digging Height		11720 mm
P最大挖掘深度 Max. Digging Depth		7380 mm
Q最大挖掘距离 Max. Digging Reach		12170 mm
R尾部回转半径 Tail turning radius		4235 mm



分类Category	配置项Feature	ZE750G
动力系统 Powertrain	空气滤清器Air filter	●
	旋流式空气预滤器Swirl type air pre-cleaner	○
液压系统 Hydraulic system	油浴式空气预滤器Oil bath air pre-filter	●
	破碎管路流量调节Breaker pipeline flow adjustment	●
	破碎管路(有蓄能器) Breaker pipeline (Accumulator)	○
驾驶室 Cab	司机室 Cab	●
	FOPS	●
	前上细网格防护 Front upper Mesh guard	○
	前下细网格防护 Front lower Mesh guard	●
	顶栅格防护 Top Skeleton guard	●
	前上栅格防护 Front upper Skeleton guard	○
	前下栅格防护 Front lower Skeleton guard	○
	灭火器 Fire extinguisher	●
	空气悬浮座椅Air suspension seat	●
	遮阳帘Sunshade curtain	●
	冷暖空调 Air conditioner	●
	普通手柄 Joystick	●
平台下封板 Lower sealing plate of platform	6mm	●
下车 Lower structure	2筋钢履带 Double grouser steel track	●
	3筋钢履带 Triple grouser steel track	○
	650mm履带 650mm track	●
	750mm履带 750mm track	○
	全防护链板 Full protection track guide	●
工作装置 Work Equipment	标准动臂长度 Standard boom length	●7100mm
	标准斗杆长度 Standard arm length	●2900mm
	选配动臂 Optional boom	○6800mm
	油缸护套(一套) Cylinder jacket (set)	○
	动臂油缸底部防护 Boom cylinder bottom protection	○(破碎专用 Special for breaking)
铲斗 Bucket	标配 Standard	●5.1m³(强化Reinforced bucket)
	选配1 Optional 1	○4.6m³(岩石Rock bucket)
	选配2 Optional 2	○5.5m³(土方Dirt bucket)

STANDARD 标配 ●
OPTIONAL 选配 ○

分类Category	配置项Feature	ZE750G
电气 Electrical system	声光报警器 Acousto-optic alarm	●
	急停开关 Emergency stop switch	●
	24V电源接口 24V DC outlets	●
	后视摄像头 Rear view camera	●
	配重照明灯 Counterweight lighting	○
	驾驶室前顶灯 Cab front light	●2个 2pc
	动臂工作灯 Boom light	●2个 2pc
	转台灯 Upper frame light	●1个 1pc
	燃油加注泵 Refuelling pump	○
	GPS	●
	AM/FM收音机 AM/FM radio	●
属具 Attachment	推荐破碎锤钎杆直径1 Recommended breaker drill rod diameter 1	210mm
	三角破碎锤 Triangle breaker	○
	直型破碎锤 Straight breaker	○
维护保养 Maintenance	自动润滑系统 Automatic lubrication system	○
其他 Others	驾驶室后视镜 Cab rearview mirror	●1个 1pc
	扶手后视镜 Handrail rearview mirror	●1个 1pc

起吊能力表 LIFT CAPACITY

适用机型: ZE750G
动臂7100mm, 斗杆2900mm, 底盘轴距4690mm, 轨距3300mm, 履带板宽650mm, 配重12000kg
在斗杆末端起吊, 无铲斗。
计算有铲斗的起吊能力, 只须从下面的值中减去直接安装铲斗或快速安装铲斗的实际重量即可。

Applicable models: ZE750G
Boom 7100mm, arm 2900mm, crawler wheelbase 4690mm, track gauge 3300mm, track shoe width 650mm, counterweight 12000kg
Lift at the end of the arm without a bucket.
To calculate the lifting capacity of a bucket, simply subtract the actual weight of a directly or quickly installed bucket from the values below.

高度 Height	半径 Radius	3.0m		4.5m		6.0m		7.5m		9.0m		最大距离 Maximum reach		
														mm
7.5m	t							*12.294	*12.294			*10.216	*10.216	8531
6.0m	t					*16.171	*16.171	*13.244	*13.244	*11.506	*11.506	*10.14	*10.14	9249
4.5m	t					*18.702	*18.702	*14.561	*14.561	*12.056	11.554	*10.494	9.747	9706
3.0m	t					*20.928	*20.928	*15.818	*15.818	*12.664	11.275	*11.217	9.23	9887
1.5m	t					*22.106	22.018	*16.623	15.269	*13.017	11.004	*11.303	9.19	9844
0m	t					*21.98	21.498	*16.685	14.915	*12.781	10.821	*11.343	9.666	9556
-1.5m	t			\	\	*20.642	*20.642	*15.744	14.824	*11.29	10.833	*11.238	10.837	9001
-3.0m	t	*27.039	*27.039	*26.846	*26.846	*22.937	*22.937	*17.839	*17.839	*13.198	*13.198	*10.717	*10.717	8116
-4.5m	t	\	\	*16.636	*16.636	*12.49	*12.49					*9.073	*9.073	6807

- 表中载荷符合SAE J1097和ISO 10567液压挖掘机举升标准。
- 额定载荷不超过液压举升能力的87%或倾翻载荷的75%。
- 带有星号(*)的额定载荷主要受制于液压能力而非倾翻载荷。
- (\)代表超出工作范围

- The load in the table complies with SAE J1097 and ISO 10567 hydraulic excavator lifting standards.
- The rated load does not exceed 87% of the hydraulic lifting capacity or 75% of the tipping load.
- The load rating marked with an asterisk (*) is primarily subject to hydraulic capacity rather than tipping load.
- (\) means beyond work range

**VISION
CREATES
FUTURE**

