

ZOOMLION TRUCK CRANE ZTC250V532-2



ZOOMLION

Zoomlion Heavy Industry Science & Technology Co.,Ltd.

Add: No.677, Lugu Road, Zoomlion Industrial Park, Changsha, Hunan, China, 410205

Copyright©2023 Zoomlion. All rights reserved. Reproduction and copying of any part of contents is not allowed for any purposes without Zoomlion's approval.



Product specifications are subject to change without notice and obligation. The photographs and/or drawing in this document are for illustrative purposes only. Please consult your local ZOOMLION dealer for more information.
website:en.zoomlion.com 2023.09.15

ZOOMLION

4.0
PRODUCTS

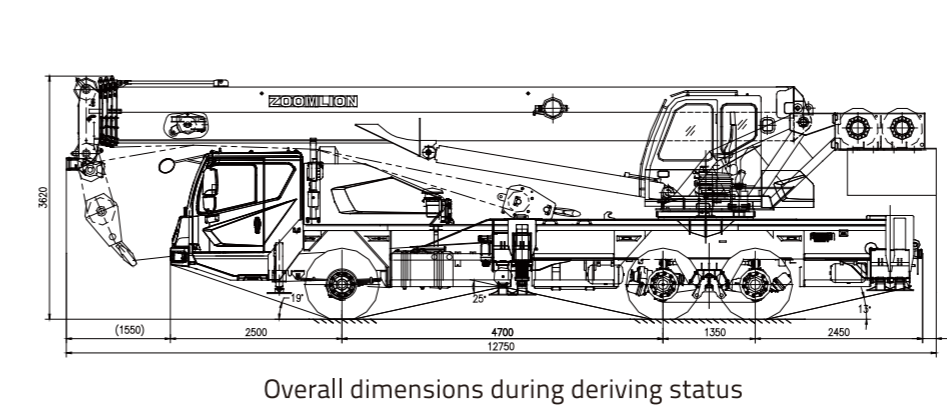
CONTENTS

DIMENSION	2
OM COMBINATIONS	2
CRANE AND COMPONENT WEIGHTS	3
LIFTING HEIGHT CHART	3
LIFTING CAPACITY TABLES	4-5
TECHNICAL SPECIFICATIONS	5
MAIN TECHNICAL PARAMETERS	6

DIMENSION

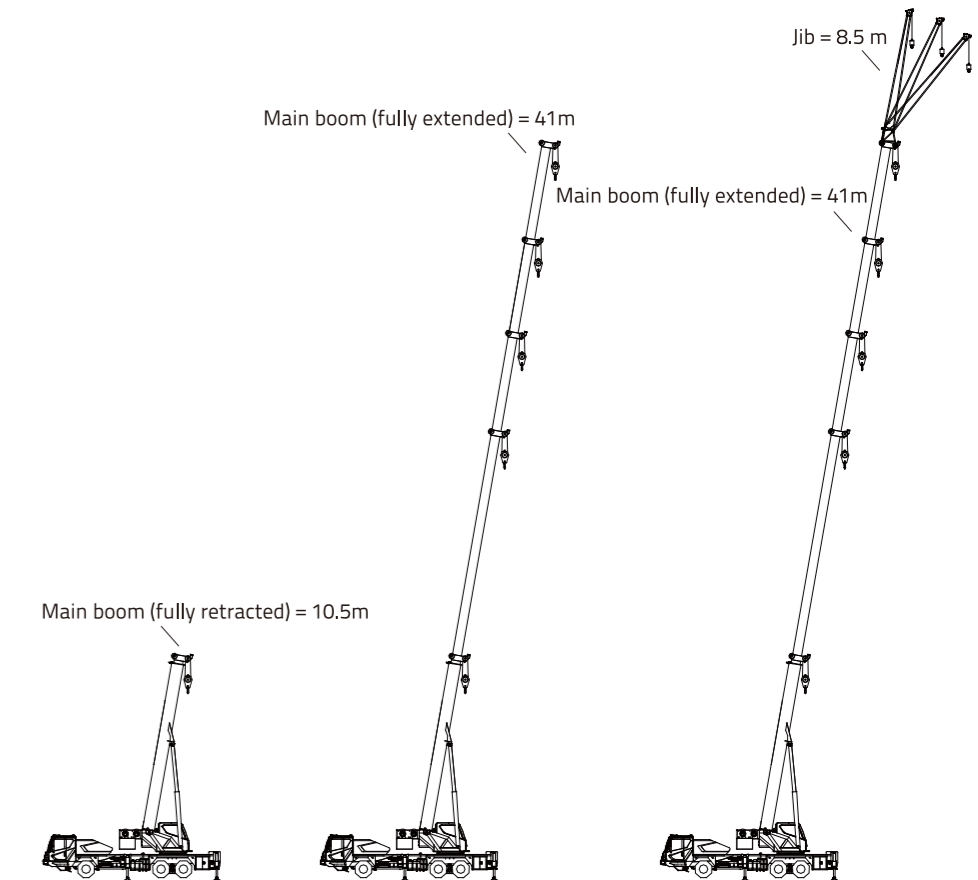
Operation condition

Unit: mm



OM COMBINATIONS

Working Condition	Boom/Jib Length
Main boom	Main boom 10.5m-41m
Main boom + Jib	Main boom 41m + Jib 8.5m



CRANE AND COMPONENT WEIGHTS

🛖 Axle	1	2	3	Total weight
T	6.35	12.425	12.425	31.2

🪝 Hook Detailed Description

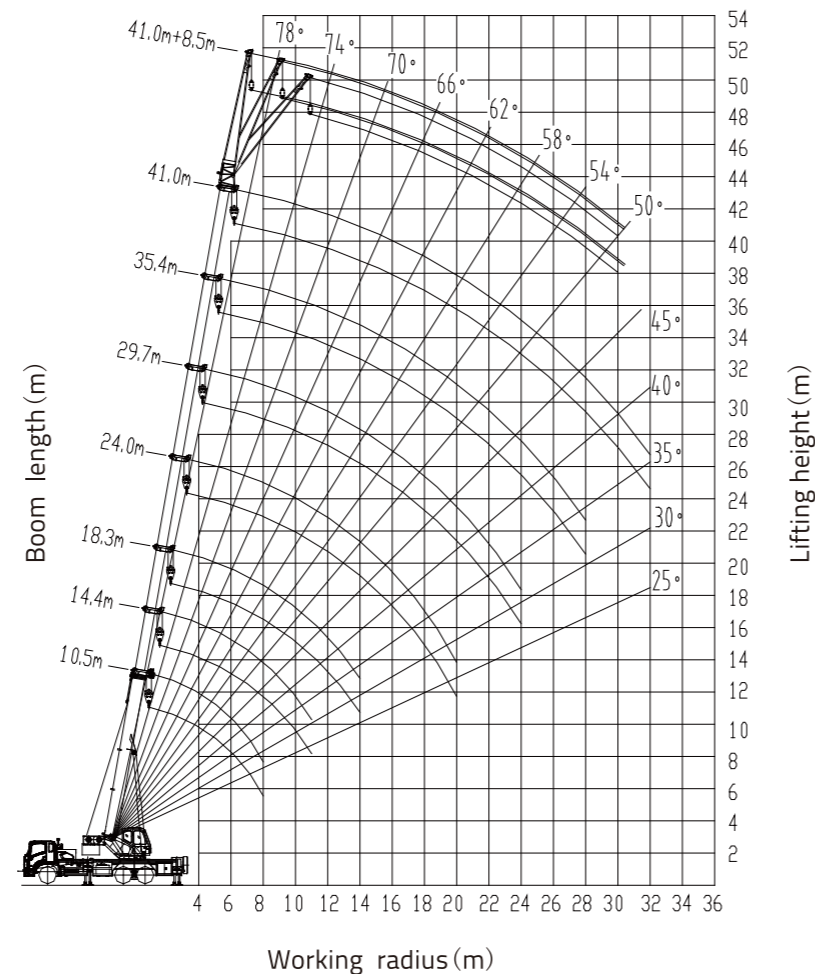
Hook Load T	No. of Sheaves	No. of Lines	Weight Kg	Remark
25	4	8	260	standard
3	—	1	60	standard

🚚 Working Speed

⚙️	km/h MAX.	🔧	⚙️
12R22.5/11.00R20	85	43	9/1

Drive	Operation Speed	Rope diameter/length	Max. single line pull
1	120m/min	φ 17.0mm/175 m	4400kg
2	120m/min	φ17.0mm/105 m	4400kg
360		0 ~ 2.8r/min	
📐		33s / 80s	
📐		75s / 80s	

LIFTING HEIGHT CHART



LIFTING CAPACITY TABLES

Unit: kg

Working radius (m)	Boom length (m)						
	Telescopic cylinder I fully extended, outriggers fully extended, over side or rear working area						
	10.5	14.4	18.3	24	29.7	35.4	41
3	25000	25000					
3.5	25000	25000	19500				
4	24800	24200	19500				
4.5	23200	22600	19500	17600			
5	22400	20900	19500	17600			
5.5	20100	19400	18500	17600	13500		
6	18400	18000	17200	16700	13500		
6.5	17000	16800	16000	15800	13500		
7	15600	15200	14700	14800	13050	10000	
7.5	14200	13900	13700	13900	12450	10000	
8	13300	12800	12500	13100	11800	9900	
9		11000	11000	11300	10650	9100	6800
10		9050	8850	9650	9650	8300	6800
11		7400	7250	8000	8500	7500	6600
12		6150	6000	6750	7200	6900	6150
13			5000	5750	6200	6400	5750
14			4200	4900	5350	5700	5350
15				4200	4650	4950	4950
16				3650	4050	4350	4600
18				2700	3100	3450	3650
20				2000	2400	2700	2900
22					1850	2150	2300
24						1400	1850
26							1250
28							950
30							850
32							650
I	0	3.9	7.8	7.8	7.8	7.8	7.8
II	0	0	0	5.7	11.4	17.0	22.7
Reeving	8	8	6	5	4	3	3
Hook							25t

The value in Column I refers to the extended length of Cylinder I under corresponding boom operating mode, while the value in Column II refers to 3 times of the extended length of Cylinder II.

Unit: kg

Working radius (m)	Boom length (m)					
	Telescopic cylinder I intermediately extended, outriggers fully extended, over side or rear working area					
	10.5	14.4	20.1	25.8	31.5	37.1
3	25000	25000				
3.5	25000	25000				
4	24800	24200	17600			
4.5	23200	22600	17600			
5	22400	20900	17600	16000		
5.5	20100	19400	17600	16000		
6	18400	18000	17600	16000		
6.5	17000	16300	16600	16000	10400	
7	15600	15200	15300	15200	10400	
7.5	14200	13900	14400	14300	10400	7500
8	13300	12800	13500	13500	10000	7500
9		11000	12000	12100	9400	7500
10		9050	9950	10450	8600	7100
11		7400	8300	8800	7900	6550
12		6150	7000	7500	7300	6050
13			6000	6450	6750	5600
14			5100	5600	5900	5200
15			4450	4900	5200	4900
16			3850	4300	4600	4600
18				3350	3650	3850
20				2650	2900	3100
22				2050	2350	2500
24					1850	2050
26					1500	1650
28						1350
30						1050
32						800
I	0	3.9	3.9	3.9	3.9	3.9
II	0	0	5.7	11.4	17.0	22.7
Reeving	8	8	5	4	3	3
Hook						25t

LIFTING CAPACITY TABLES

Unit: kg

Working radius (m)	Boom length (m)				
	Telescopic cylinder I fully retracted, outriggers fully extended, over side or rear working area				
	10.5	16.2	21.9	27.6	33.2
3	25000	17600			
3.5	25000	17600			
4	24800	17600	16000		
4.5	23200	17600	16000		
5	22400	17600	16000	11500	
5.5	20100	17600	16000	11500	
6	18400	17600	16000	11500	
6.5	17000	17600	16000	11200	7800
7	15600	16300	16000	10650	7800
7.5	14200	14900	15000	10100	7800
8	13300	13800	14300	9600	7800
9		12100	12400	8650	7350
10		10400	10900	7900	6700
11		8750	9200	7300	6150
12		7450	7900	6700	5650
13		6400	6850	6250	5250
14			6000	5800	4850
15			5250	5450	4550
16			4650	4900	4250
18			3700	3950	3750
20				3200	3350
22				2650	2800
24					2300
26					1950
28					1600
I	0	0	0	0	0
II	0	5,7	11,4	17,0	22,7
Reeving	8	6	5	4	3
Hook			25t		

Unit: kg

Boom angle (°)	Boom + jib		
	Outriggers fully extended		
	41.0 m + 8.5 m		
	0°	15°	30°
	Over side or rear working area	Over side or rear working area	Over side or rear working area
80	2800	2800	2150
78	2800	2800	2050
76	2800	2500	2000
74	2800	2400	1900
72	2800	2200	1800
70	2700	2100	1700
68	2500	2000	1600
66	2400+	1800	1550
64	2100	1750	1500
62	1850	1600+	1450
60	1550	1400	1400+
58	1350	1250	1200
56	1150	1100	1050
54	1000	950	900
52	800	750	700
50	700	650	600
Reeving		1	
Hook		3t	

TECHNICAL SPECIFICATIONS

superstructure

Boom and telescoping mechanism	The boom has five box-type telescoping sections of U-shape profile and superior bending resistance. The boom body is fabricated from low-alloy and high-strength steel
Jib	The one-section pull-rod type jib is folded on one side of the boom when it is not used and can be installed and removed by inserted pins. Offset: 0°, 15° or 30°
Slewing platform	The profile-structured slewing platform which has been optimized through designs
Rooster sheave	It is secured at one side of the boom head when not being used. It can be rotated around the shaft and pinned onto the boom head when it is used
Derricking mechanism	Single front-mounted hydraulic cylinder installed with a balance valve provides the boom with smooth derricking movements within the range of -2° to 80°
Slewing mechanism	Via the planetary gear reducer, the axial plunger hydraulic motor drives the pinion gear on the output shaft to rotate the toothed ring of the slewing bearing fixed on the chassis
Hoist mechanism	It consists of a main hoisting winch and an auxiliary hoisting winch. A brake is fitted between the motor and reducer. The main winch and auxiliary winch can work independently or simultaneously.
Main and auxiliary hooks	Main hook: rotatable, 25 t, with 4 pulleys, a mounting lug at rope end and a hook safety device. Auxiliary hook (1 reeving): rotatable, 3 t, with a hook safety device
Operator's cab	The operator's cab is a welded steel-structure with spacious vision. AC and Heater
Outriggers	H-type outriggers in box structure are welded by low-alloy and high-strength steel. The 5th outrigger is installed beneath the driver's cab. When the 5th outrigger is set up, the
Hydraulic system	The open-type hydraulic system adopts advanced pilot-operated proportional joysticks and hydraulic proportional control system. It separately controls the movements of slewing, telescoping, derricking and hoisting. Hydraulic tank:546L
Electrical system	Double-wired system, 24 Volt DC
Safety devices	Automatic load moment limiter, warning light, digital LCD, Hoisting limit switch, Balance valve

Crane Carrier

Engine	YCS06270-30 Rated power: 199/2300 kW/r/min; Max. output torque: 1050/1700 m/r/min Fuel tank: 250L
Limits for exhaust pollutants and smoke	Chinese National Stage III

MAIN TECHNICAL PARAMETERS

Item		Value	Remarks	
Working performance	Max. rated lifting capacity	kg	25000	
	Max. load moment of basic boom	kN.m	1098	
	Max. load moment of Max. length boom	kN.m	734	
	Max. lifting height of basic boom	m	10.3	
	Max. lifting height of boom	m	41.3	
Working speeds	Max. lifting height of jib	m	49.5	These parameters do not include deflection of boom and jib
	Max. hoist rope speed (Main winch)	m/min	120	At 4th layer
	Max. hoist rope speed (Auxiliary winch)	m/min	120	At 4th layer
	Boom derricking up /down time	s	33/80	
	Boom telescoping out/in time	s	75/80	
	Outrigger retraction/extension time (horizontal)	s	20/28	
	Outrigger retraction/extension time (vertical)	s	20/28	
	Slewing speed	r/min	0 - 2.8	
	Driving	Max. operation altitude	m	2000
		Max. driving speed	km/h	85
Max. gradeability		%	43	
Min. turning diameter		m	20.5	
Approach angle		°	19	
Departure angle		°	13	
Min. ground clearance		mm	250	
Mass	Oil consumption per hundred kilometer	L	28	
	Deadweight in driving condition	kg	31200	
	Complete vehicle kerb mass	kg	31070	
	Front axle load	kg	6350	
Dimensions	Rear axle load	kg	24850	
	Overall dimensions (L xW xH)	mm	12750 x2550 x3620	
	Longitudinal distance between outriggers	m	5.53	
	Transversal distance between outriggers	m	For completely extended outrigger: 5.4 m for intermediately extended outrigger: 4.36 m	
	Tail slewing radius	mm	3420	
	Boom length	m	10.5-41.0	
	Boom angle	°	-2- 80	
	Jib length	m	8.5	
Jib angle	°	0, 15, 30		